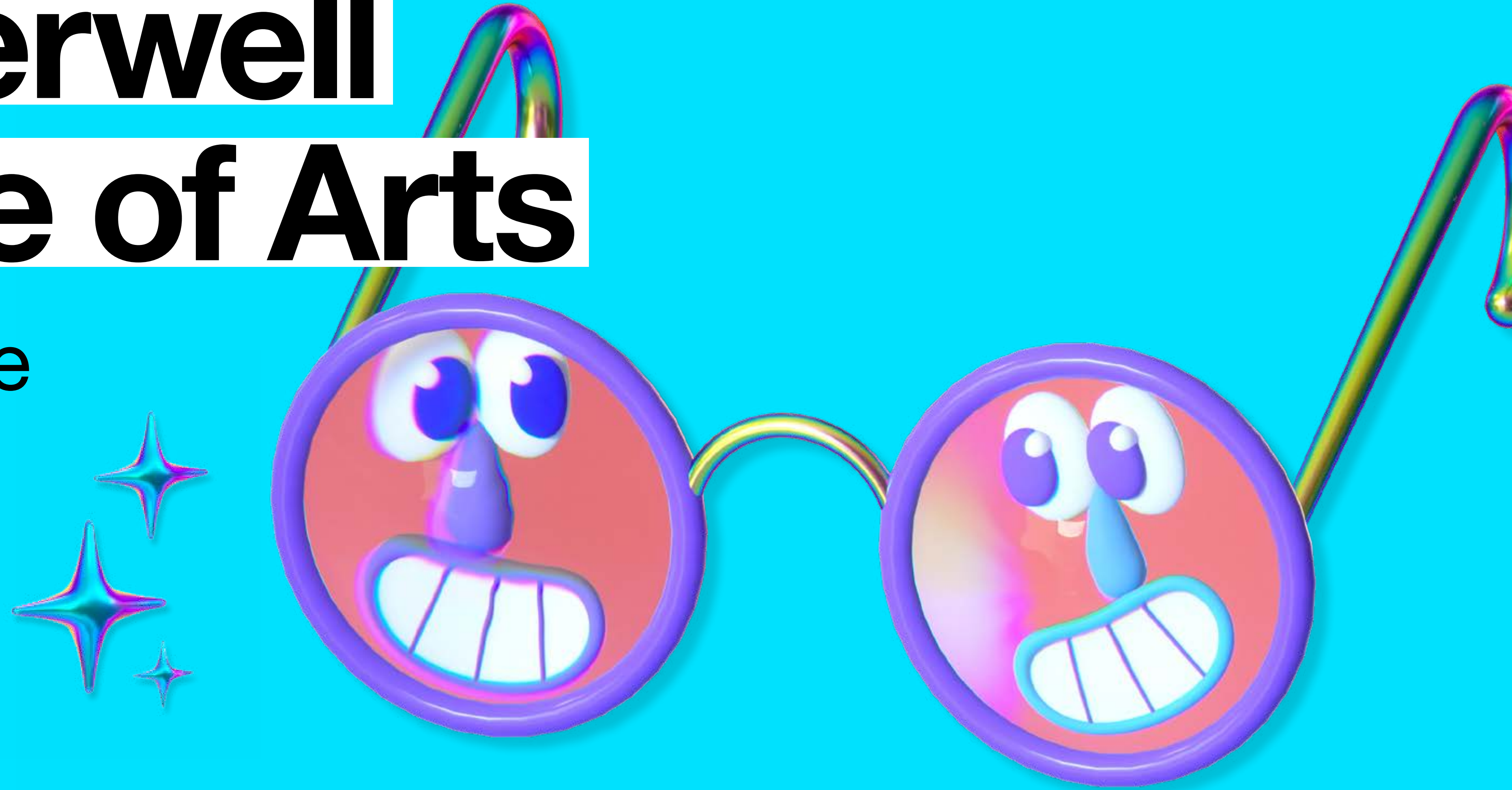


ual:

Camberwell College of Arts

Welcome guide



Contents

→ Camberwell College of Arts

- 04 Meet your Head of College
- 05 Student voices
- 06 Need to know
- 07 ID cards
- 08 Spaces and resources
- 11 Health and safety
- 12 Student support
- 13 Making the most of Camberwell

→ UAL guide

- 15 Introduction
- 18 Need to know
- 19 Our culture
- 21 Making the most of UAL
- 24 Get support
- 25 Academic support
- 26 Get connected
- 27 Stay informed
- 28 Wellbeing
- 29 Arts SU and you
- 30 Making the most of Arts SU
- 31 Living in London
- 32 Travel
- 34 Save money
- 35 Stay safe








This guide is designed to help you settle into your new life as a student at Camberwell College of Arts, University of the Arts London (UAL). In this half you'll find information specifically about the College and in the other half you'll find information for all UAL students.

The information included within this guide was correct at the time of publishing. However, due to COVID-19, access to our sites and services may change. Please visit www.arts.ac.uk/students/the-big-welcome for the latest information and advice.

How to use this guide

-  This means you can find out more online
-  This means there is an email address
-  This indicates information about sustainability

Connect with us





Camberwell College of Arts

45 - 65 Peckham Road
London
SE5 8UF

Foundation Centre

1 Wilson Road
London
SE5 8LU






+44 (0)20 7514 6302

-  @CamberwellUAL
-  @camberwellual
-  @CamberwellUAL
-  Camberwell College of Arts

University of the Arts London

272 High Holborn
London
WC1V 7EY

+44 (0)20 7514 6000

-  @UniversityoftheArtsLondon
-  @unioftheartslondon
-  @UAL
-  universityoftheartslondon
-  University of the Arts London

Illustrations by Jack Sachs, 2013 [BA Illustration](http://www.jacksachs.co.uk),
[Camberwell College of Arts, UAL](http://www.jacksachs.co.uk)
[jacksachs.co.uk](http://www.jacksachs.co.uk)

David Crow

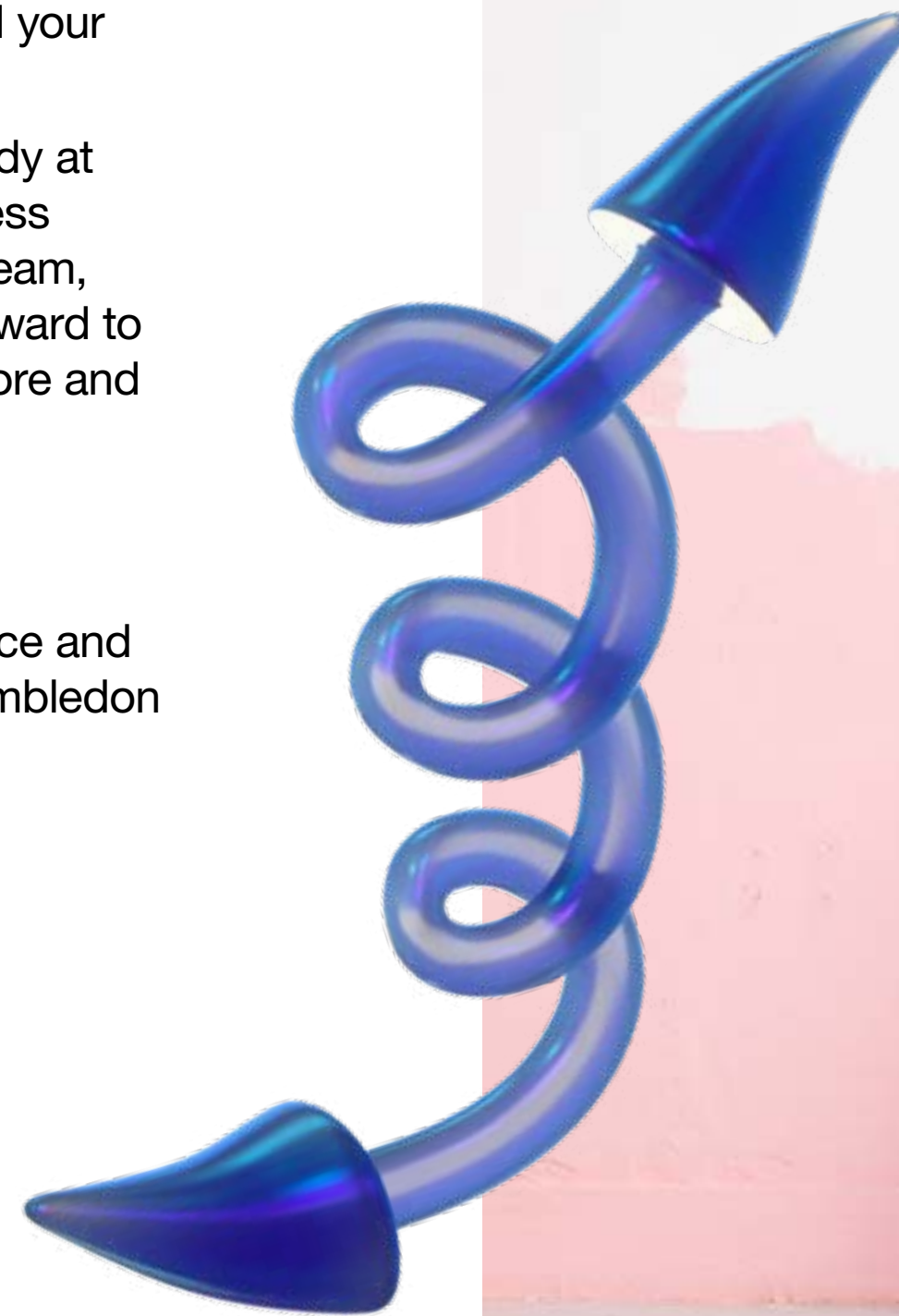
Welcome to your first term at Camberwell College of Arts. I am confident that you will have an inspiring, enjoyable and rewarding experience as a student here.

Here at Camberwell, we are a renowned art and design College driving positive social impact through art and design. Our unique studio culture offers students the freedom and support to explore their individual creativity to embrace both traditional craftsmanship and digital technology. We believe passionately in social citizenship while maintaining the view that arts must remain committed to the rewards of free enquiry and experimentation.

Your College is 1 of 3 that work very closely together: Camberwell, Chelsea and Wimbledon. Each of our 3 art Colleges has its own special character with an international network of partners and alumni. Together we have a shared desire to explore the possibilities of our disciplines and to help you build your career as a creative professional.

I am delighted you have chosen to study at Camberwell and wish you every success during your time with us. The course team, technical and support staff all look forward to working with you as you begin to explore and expand your creative practice.

Professor David Crow
Pro Vice-Chancellor Student Experience and
Head of Camberwell, Chelsea and Wimbledon



David Crow, 2019 | Photograph: David Leven

Student voices

“I have had the time to explore what it is that I want to make right now, and what I want to achieve in the future.”

Rory Wynn
BA Illustration

“I feel like I have been equipped with the tools to approach a wide variety of briefs, and the flexibility to make a living doing what I love.”

Naomi Anderson-Subryan
BA Illustration

“Everything is about practice, preparation and experimentation.”

Jermaine Robinson
BA Fine Art Sculpture

“The amazing technicians have helped me create work to my best ability, while inspiring me with new ideas and skills.”

Phoebe Ackers
BA Fine Art Sculpture

“Camberwell is a small community where I could express myself through all the facilities that help students develop ideas and projects.”

Maria Sabrina Scassa
BA Fine Art Photography



Need to know

Start your journey here



Where to find us

Our main campus is on Peckham Road. We also have a dedicated building for Foundation students a short walk away on Wilson Road.

Main campus

Camberwell College of Arts
45-65 Peckham Road
London
SE5 8UF

Nearest transport

- Peckham Rye Overground
- Denmark Hill Overground

Wilson Road Foundation Centre

Wilson Road Foundation Centre
1 Wilson Road
London
SE5 8LU

Nearest transport

- Peckham Rye Overground
- Denmark Hill Overground

🚩 [Find out more about our term time opening hours for Peckham Road and Wilson Road](#)

Please note that the listed opening hours may be subject to change. Check with your course team for more information about when you will be able to access the College.

Student Services

Located in the Student Centre, Student Services can assist you with the following:

- Finance, health, disability, counselling
- Study support enquiries

Appointments, information and support are also available via email, telephone and video call (Microsoft Teams, Skype, Zoom).

+44 (0)20 7514 6354 (term time)

✉ student.services@arts.ac.uk

🚩 [Find out about full access and route guides](#)

Student Contact Desk

Located in Block A on the first floor, the Student Contact Desk can help you with all your general enquiries including: `

- College access
- Assessments
- Course work submissions
- Enrolment
- Extenuating Circumstances, appeals and complaints
- ID cards
- International student queries
- Letters

Autumn Term opening hours:
Monday – Friday: 10am – 4pm,
(closed 12pm – 1pm)

Opening times may be subject to change.

Appointments, information and support are also available via email, telephone and video call (Microsoft Teams).

Contact:

+44(0) 207 514 2106

✉ studentcontactdesk@camberwell.arts.ac.uk

Requesting letters

To get letters for bank accounts, Council Tax exemption or the Confirmation of Enrolment letter (used for visa applications) you have the following options:

- Visit the Student Centre in person with your ID card
- Email from your University email address including your student ID

✉ studentcontactdesk@camberwell.arts.ac.uk

Download the appropriate letter by logging into the UAL Portal on 🚩 sits.arts.ac.uk

Please note that during busy times, especially the start of term, it may not be possible to process letters instantly. It's best to wait until you've received your letter before making any visa or bank account appointments in case there's a delay.

ID cards

You will receive a student ID card and holder when you enrol. The card will be pre-programmed to give you access to the rooms and areas you'll need for your course. Camberwell operates a strict no pass no entry policy to ensure security across all sites, so please remember to bring your ID card with you every day, especially as you'll also need it for printing.

Q: What should I do if I lose or forget my ID card?

If you forget your card, just speak to reception who will be able to print you a temporary pass.

If you lose your card or it gets stolen, you should get a replacement as soon as possible to avoid other people using your old card to pay for printing or hiring out equipment that you are responsible for. To request a new or replacement ID card please email ccwstudentsupport@arts.ac.uk.

You can only own one ID card at a time. If you lose your ID card, the old one will be deactivated as soon as a replacement is activated.

Q: What should I do if my card gets stolen or damaged?

If your ID card is stolen, you'll need to present a Police Crime Report Number to the Student Contact Desk to receive a new card. If your ID card doesn't work, then contact the Student Contact Desk – if it is damaged you can get a free replacement as long as you can prove that it is damaged.

Q: Can I share my ID card with another student?

No. ID cards are issued to individual students and must not be shared. Anyone found to be using another student's ID card will have it confiscated and both students could face disciplinary action.

Visitors

If you want to bring a visitor on site, you should speak to an academic from your course who will book in your visitor. Reception will need 24 hours' notice.

Visitors will be given a temporary pass that they'll need to keep with them while on site. You must stay with your guest during the whole of their visit.



Spaces and resources

Our 2 new buildings make Camberwell a unique campus environment providing high-quality teaching and research facilities for our students.

Our sites include large studios and teaching spaces, a new lecture theatre, library and study spaces, and a new public gallery.

Students can use our 24-hour Learning Zone, located on the ground floor of our on-site hall of residence Gardens House.

Your course team will give you more information about inductions and facilities when you start.

Library

Camberwell is your home library. The collections reflect the teaching and research interests of the College. The library entrance is through the south stairwell on the first floor of B Block.

As well as books, DVDs and journals, you can access extensive online resources both on and off site. Use [⚡ libsearch.arts.ac.uk](http://libsearch.arts.ac.uk) to use our click and borrow service or find online resources.

The Library has individual study areas and a computer space with Macs and PCs, and MacBooks to borrow.

Academic Support Librarian

Your Academic Support Librarian works with your course team. They run group sessions about finding and managing information. You can book a one-to-one tutorial with them.

They deliver online sessions about finding and managing information, and you can book a one-to-one tutorial with them, or attend an online drop-in session. These sessions can be booked through Academic Support Online [⚡ academicsupportonline.arts.ac.uk](http://academicsupportonline.arts.ac.uk).

Check [⚡ arts.ac.libguides.com/yourlibrarian/CCW](http://arts.ac.libguides.com/yourlibrarian/CCW) to find out who your Academic Support Librarian is.

Online Library

UAL Libraries also offer services online where library staff can help you use online resources, support your learning and answer your questions.

Opening Times

You can check library opening days and times at: [⚡ arts.ac.uk/students/library-services/opening-hours-and-locations](http://arts.ac.uk/students/library-services/opening-hours-and-locations)

Please note, these may be subject to change and holiday opening hours may vary.

See the Library FAQs for more information, ask us a question, or chat with us online at [⚡ arts.ac.libanswers.com](http://arts.ac.libanswers.com)

[⚡ Find out more about Library Services](#)

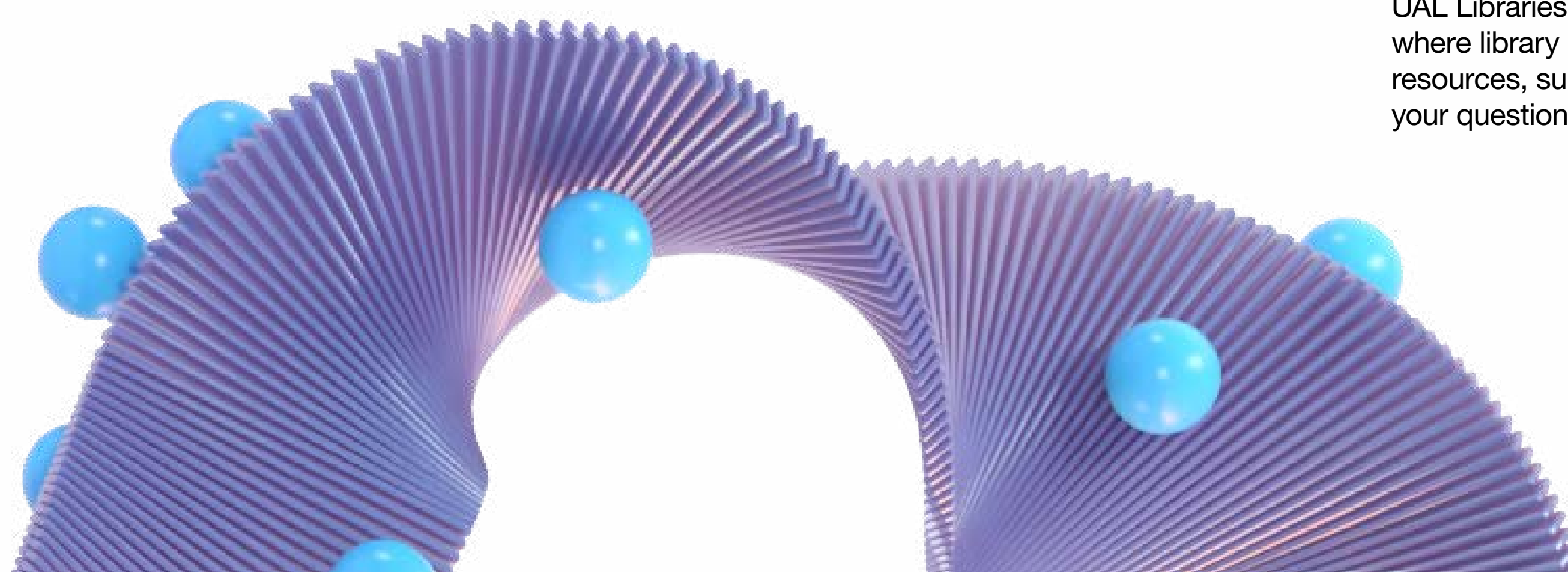
[⚡ Find out more about disability and dyslexia](#)

+44 (0)20 7514 6349

[🐦 @CCALibrary](#)

[@UALLibraries](#)

Discover more info on libraries across UAL in the other half of this document.



Spaces and resources

Food and drink

With a focus on health and sustainability, the Camberwell canteen offers meals cooked with local ingredients. You can also visit the Grab & Go at Wilson Road for a selection of hot drinks, light lunches and snacks.

More information about access will be available during your site induction.

 [Peckham Road canteen and Wilson Road Grab & Go term time opening hours](#)


 [Find out more about UAL Canteens](#)

Gender neutral toilets

The University designates some of its toilets as gender neutral. These toilets are for everyone to use, in addition to male and female toilets. At Camberwell you can find these at Peckham Road and Wilson Road sites.

Cycling

At Peckham Road students can bring their bikes through the reception and access bike storage in allocated racks in the back courtyard. At Wilson Road students can lock their bikes to the bike racks at the front of the building or find their way through to the bike racks on site.

Contact the Facilities and Estates to find out more at  estateshelpdesk@arts.ac.uk or on +44 (0)20 7514 8000 during office hours.

Quiet spaces

Camberwell has quiet spaces available for staff and students for prayer, personal reflection, health requirements, breastfeeding and rest. Contact the Student Desk for access details. You can find these here:

- Camberwell Peckham Road: Room B07
- Camberwell Wilson Road: Room G23a

arts shop

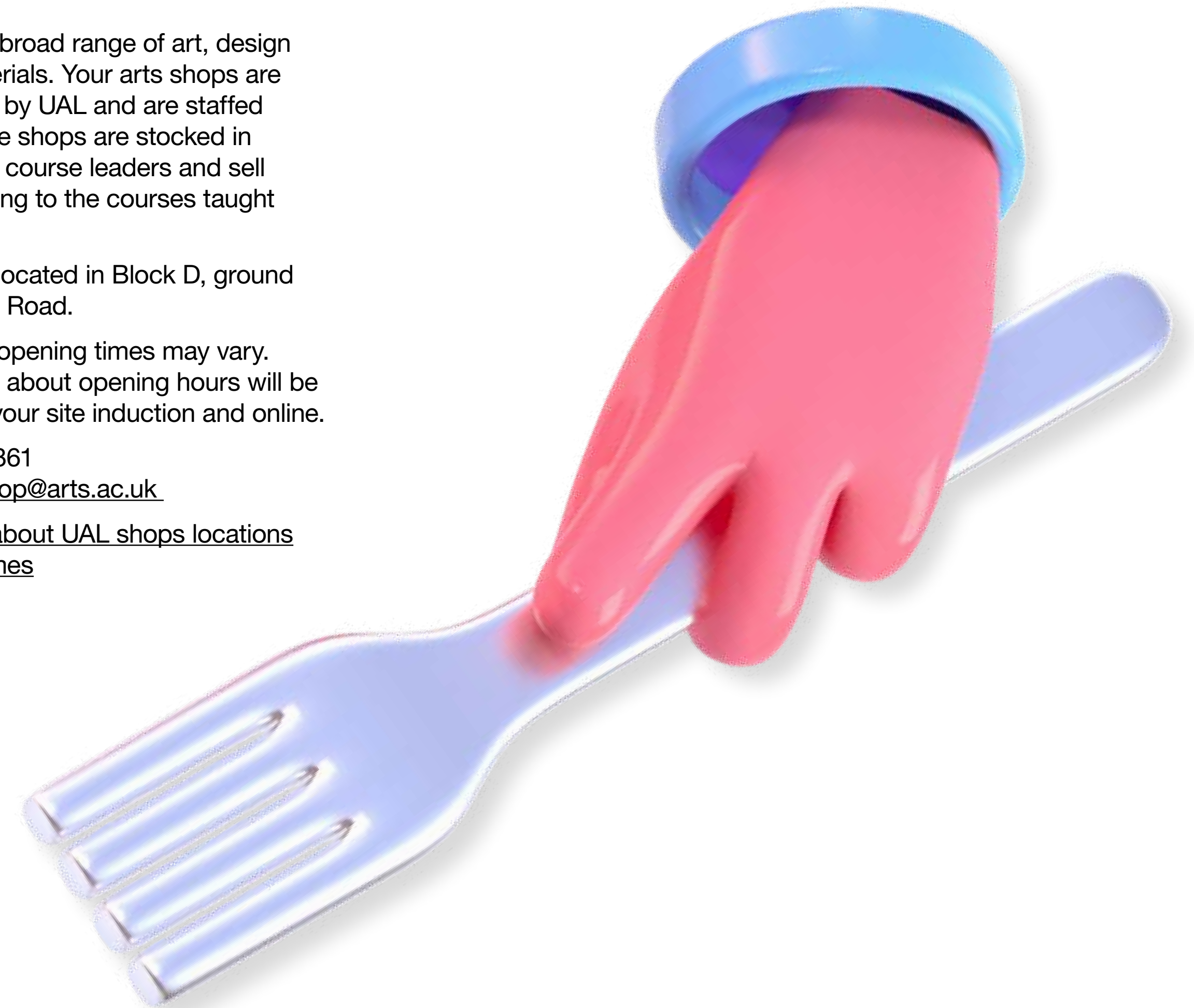
arts shops sell a broad range of art, design and fashion materials. Your arts shops are not for profit, run by UAL and are staffed by graduates. The shops are stocked in consultation with course leaders and sell products according to the courses taught at each site.

Our arts shop is located in Block D, ground floor at Peckham Road.

Please note that opening times may vary. More information about opening hours will be available during your site induction and online.

+44 (0)20 7514 6361
 camberwellshop@arts.ac.uk

 [Find out more about UAL shops locations and opening times](#)



Spaces and resources

Camberwell, Chelsea and Wimbledon Print Services

The print service for Camberwell, Chelsea and Wimbledon is based in room DG01-9 in D Block at Chelsea and is available to all students. Printing and finishing are by appointment only, so please contact the team prior to sending in your artwork. Drop in, email or call the team to book an appointment or to discuss your printing requirements.

✉ ccw.printservices@arts.ac.uk

General enquiries: +44 (0)20 7514 7831 / 2056

Fine art/large format: +44 (0)20 7514 2046

Finishing and framing: +44 (0)20 7514 7808

Workshops and technical resources

As a Camberwell student, you have access to loads of different facilities including industry standard workshops, studios and equipment. Each area has expert technicians on hand with the support and guidance you'll need to help make your ideas come to life.

Our 3D workshops allow students to make work in metal, ceramics, plastic and wood. Our printmaking, digital media and photography centres provide students with specialist spaces and resources.

Many students find the technicians to be a huge support, as they facilitate inductions, use of machinery and are themselves master crafts people.

Most of our open access facilities are accessible only after you complete your induction sessions in the autumn term and are subject to availability. Access tends to be subject-specific and those with higher needs (i.e. final year students) will be prioritised.

🔗 [Find out more about Camberwell facilities](#)

Central Loan Store

Located at Peckham Road, the Central Loan Store (CLS) is where you can borrow a range of audio-visual, IT, photographic and lighting equipment as well as hand and power tools, on a short-term basis free of charge, subject to availability.

Please note that opening days and times may be subject to change. More information about opening hours will be available during your site induction and online.

🔗 [Find out what's available and how to book equipment](#)



Abbie Freeman in the Letterpress Workshop, 2017 BA Graphic Design, Camberwell College of Arts, UAL | Photograph: Alys Tomlinson

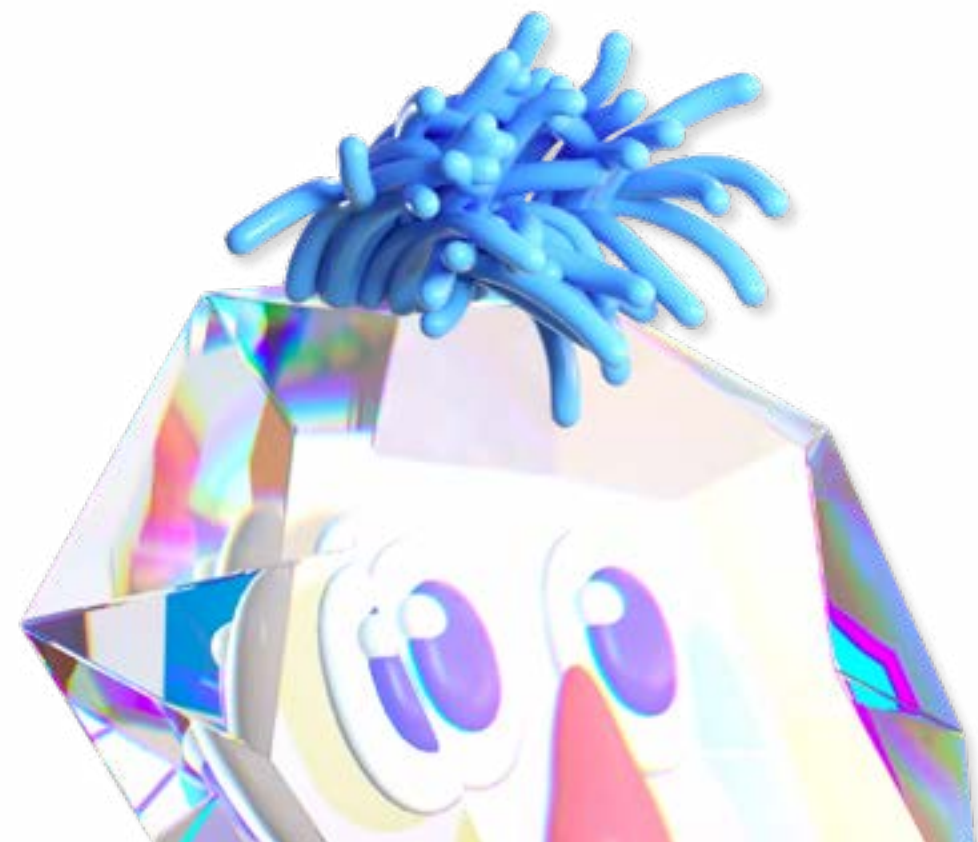
Health and safety

Fire procedure

If you discover a fire, activate the fire alarm at the nearest call point located adjacent to all emergency exits. If the alarm sounds, immediately leave the building by the nearest safest fire exit. To escape from the building please use the stairs and make your way out as quickly and safely as possible. Do not stop to collect personal belongings or use the lifts.

When the fire alarm sounds at Peckham Road or Wilson Road, you should leave the building and move away from the area. You should stay away for 20 minutes when you can return for instructions from the Fire Marshals. Do not re-enter the building until you are given the all clear.

While it's unlikely that there'll be a fire in one of our buildings, we ask all our staff and students to treat every alarm as a real emergency.



First aid

You can find first aid boxes throughout the College. Each box is clearly identified by an accompanying poster.

For first aid help at Peckham Road, dial 6352 from an internal phone or +44 (0)20 7514 6352 from a mobile.

For first aid help at Wilson Road, dial 6451 from an internal phone or +44 (0)20 7514 6451 from a mobile.

To contact the emergency services from an internal phone, call 5-999 and let them know the building address which is on the first aid posters.

🔗 [Find out more student health and safety](#)

Mental health first aid

Students who are concerned about their or someone else's mental health should contact the Student Counselling Service. Mental Health First Aiders are located in all Colleges and can provide immediate support to people in crisis.

+44 (0)207 514 6251



Daisy Shepherd and Rebecca Stevenson (Staff) in the Studio, 2018 BA Fine Art: Sculpture, Camberwell College of Arts, UAL

Student support

Academic Support

Academic Support is here to help you progress and achieve your potential, both at University and in your future career.

The Camberwell, Chelsea and Wimbledon Academic Support team works across the 3 Colleges; the relevant lead tutors are introduced to you at induction. Group sessions are arranged with your course so that they link with your curriculum in useful ways, and you can get one-to-one help too.

🔗 [Find out more on Academic Support Online](#)

To register for an academic support session, log in to Academic Support Online (ASO) using your UAL username and password, click on 'face to face support' in the menu.

Students can also go to University-wide workshops on a range of Academic Support topics, so that you can meet and share study practices with students from all levels and all Colleges across the University. You can also find ASO and College Academic Support through your course Moodle pages.

Contact the Academic Support team at:

✉ ccw-academicssupport@arts.ac.uk



Florence Goodhand-Tait working with fabric crowns in the studio, 2016 BA Illustration, Camberwell College of Arts, UAL | Photograph: Alys Tomlinson

Making the most of Camberwell

Arts SU at Camberwell

As well as having a central HQ based in High Holborn, you can also find Arts Students' Union (Arts SU) at your College! We have a dedicated team of staff and students who bring Arts SU services and general fabulousness direct to your campus.

Our Camberwell Coordinator works across both the Peckham Road and Wilson Road sites on a regular basis. If you want to find out more about an event, creative opportunity, the student-led gallery at Camberwell, funding for a project or just have a general chat, you can find us at:

Arts SU main office is located at LCF High Holborn.

Contact us at: +44 (0)20 7514 6270

Or just send us an email to arrange a meet-up at a location and time that's convenient for you.

✉ su.camberwell@arts.ac.uk

🔗 [Find out more about your student rep](#)

Find out more about your Students' Union in the other half of this guide.

Events

Our southeast London location is home to a thriving arts scene. The area hosts a variety of galleries, project spaces and studios that our students, staff and graduates work and exhibit in. These include Peckham Platform, work-form and Assembly Point.

The College itself runs lots of events all year round including screenings, talks, exhibitions, workshops, conferences and performances.

You will be automatically signed up to receive our student newsletter, highlighting events across the College. This will be sent to your UAL email address and will also include useful information and updates.

Please speak to your tutor if you would like to organise an event.

🔗 [Find out more about what's on at Camberwell](#)

Research

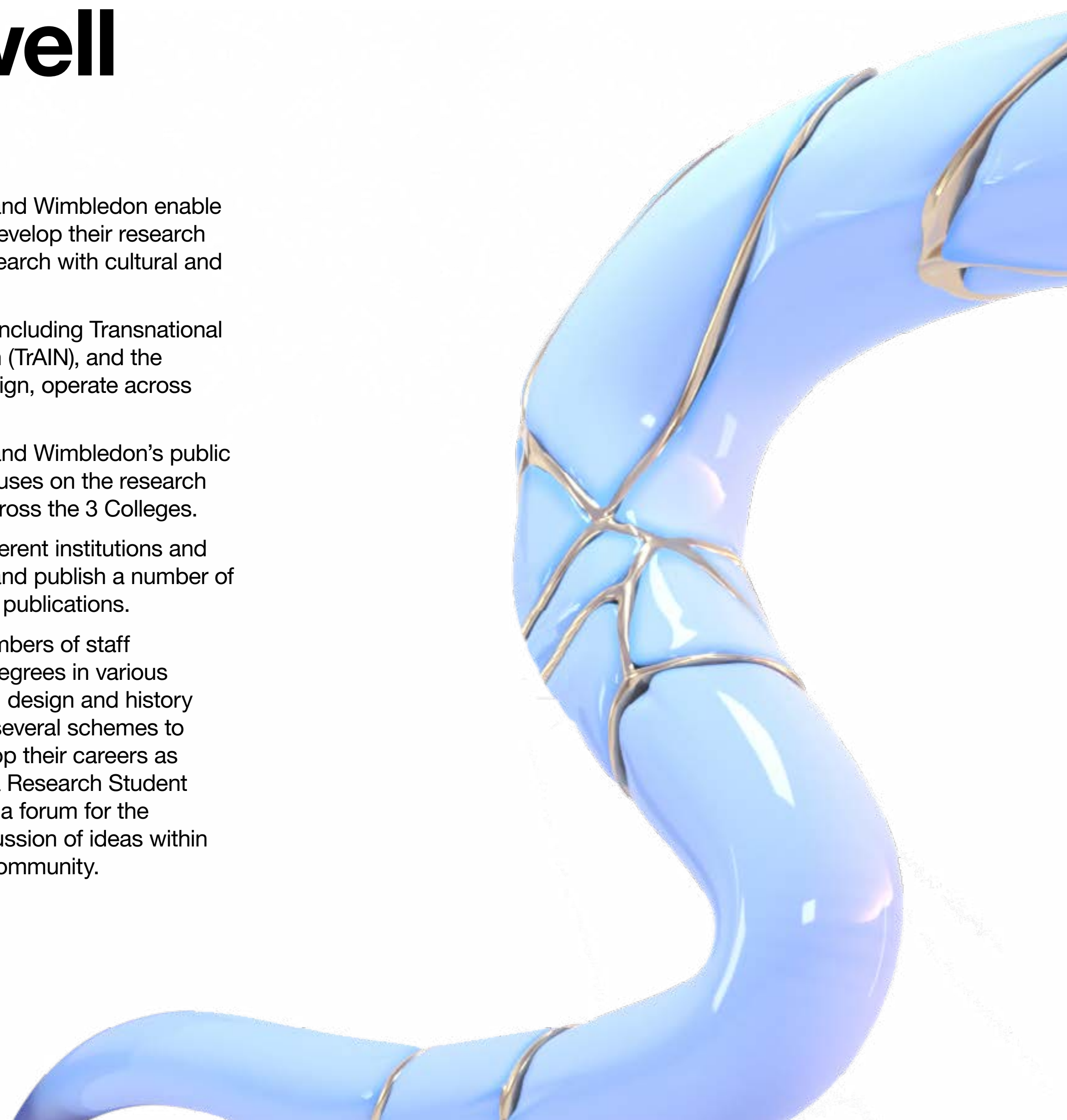
Camberwell, Chelsea and Wimbledon enable staff and students to develop their research careers and create research with cultural and social value.

Our research centres, including Transnational Art, Identity and Nation (TrAIN), and the Centre for Circular Design, operate across the University.

Camberwell, Chelsea and Wimbledon's public events programme focuses on the research activity taking place across the 3 Colleges.

Colleges work with different institutions and cultural organisations and publish a number of academic journals and publications.

They have over 40 members of staff supervising research degrees in various fields including fine art, design and history of art. They also have several schemes to help students to develop their careers as researchers and host a Research Student Programme to provide a forum for the development and discussion of ideas within the research student community.



ual:

University of the Arts London

Welcome guide

camberwell college of arts | central saint martins | chelsea college of arts | london college of communication | london college of fashion | wimbledon college of arts

arts.ac.uk



Grayson Perry

Studying at UAL is the best way into a fulfilling life of visual creativity. The reasons for coming to UAL are the same now as they were for me 40 years ago when I began my own journey into the arts: I wanted to make art and I wanted to make my mark.

UAL is the world's biggest factory for trouble. We encourage students to challenge us and I'm always on the lookout for exciting, creative talent coming through the University. I love the time I spend with our students as it helps me to take the temperature of where young people are at.

Grayson Perry CBE RA
Chancellor of UAL



UAL Chancellor Grayson Perry during the Graduation, 2019, London College of Fashion, UAL | Photograph: David Poutney

“Come and show us the future and we can help show you the world.”

Grayson Perry CBE RA
Chancellor of UAL



Grayson Perry visits the private view, 2017 MA Design School, London College of Communication, UAL

James Purnell

I'm delighted you've chosen to start your creative future at University of the Arts London, which is made up of 6 world-renowned Colleges and 3 institutes:

- Camberwell College of Arts
- Central Saint Martins (CSM)
- Chelsea College of Arts
- London College of Communication (LCC)
- London College of Fashion (LCF)
- Wimbledon College of Arts
- UAL Creative Computing Institute (CCI)
- UAL Social Design Institute
- UAL Decolonising Arts Institute

You've joined a vibrant community of 19,000 students from more than 130 countries. You're also in one of the best cities in the world for art and design, with lots of opportunities to make the most of student life. To help you navigate your time at university in London, and to take advantage of all there is to offer, we've created this handy guide. In case you missed it, you can also take a look at our [UAL student guide](#) introducing you to UAL and London.

I hope you have a fantastic time at UAL, and I wish you every success for your future.

James Purnell
President & Vice-Chancellor



James Purnell at the LCF21 digital Graduate Exhibition at Victoria House Basement 2021, London College of Fashion, UAL | Photograph: Ana Blumenkron

Morgane Sansay, 2021 Graduate Diploma Interior Design, Chelsea College of Arts, UAL

Our culture

Diversity

UAL believes the diversity of its staff and student community is fundamental to creative thinking and innovation in the arts. We are committed to removing barriers to progression and success, and promoting understanding and awareness of equality, diversity and inclusion for all.

We work in partnership with Arts Students' Union on initiatives to support this. Arts SU provides confidential advice and guidance to all students including trans and non-binary students, student carers and parents and students from diverse faith, ethnicity, gender identity and sexual orientation backgrounds.

🔗 [Find out more about student diversity](#)

Tell Someone

The University does not tolerate any form of racism, bullying, harassment or sexual violence. If at any point you have concerns, or want to talk to someone in confidence, you can contact Tell Someone.

✉ tellsomeone@arts.ac.uk

“Meeting like-minded people from all over the world inspired me to think outside the box, raised my self-awareness and opened my eyes on a different spectrum of professional opportunities.”

Khalil Madovi

Foundation Diploma in Art and Design



Our culture Sustainability

Sustainability is central to everything we do at UAL. Many of our courses dedicate time and resources to teaching sustainable practices and our central operations teams are committed to working in a sustainable way. Our Sustainability Manifesto is our action plan to keep reducing our carbon emissions. We're working to ambitious net zero carbon targets which will see us reach net zero on our direct emissions by 2030 and net zero by 2040 for our indirect emissions – this is 10 years ahead of the UK government's deadline.

📍 Green buildings

Camberwell was nominated for the “Campus of the Future” Green Gown award for our work in sustainable building. The Wimbledon Studio building also won the RIBA London Sustainability Award 2017 and a Green Apple Award for sustainability. It was the first time one of our buildings was recognised as ‘outstanding.’

More recently, LCF's East Bank campus is one of the largest buildings in an urban environment to achieve BREEAM ‘outstanding’.

📍 UAL Climate Emergency Network

The Climate Emergency Network is a growing community of students and staff who share the belief that urgent collective action is needed in the face of climate and ecological emergency. The Network publishes a regular newsletter, generates resources, curates exhibitions and organises events, while also lobbying the University and external bodies on matters concerning environmental policy, practice and justice. The Network is open to all and overseen collaboratively by both students and staff from across UAL.

🔗 [Sign up to the newsletter](#)

🔗 [Find out more about our Climate Emergency Network](#)

📍 Energy use

We're reducing carbon emissions across all our Colleges, and since 2017, we've been using 100% renewable electricity. We're proud to be the 5th most sustainable university in London according to the People & Planet University League.

📍 Saving energy and recycling

We actively encourage all our students to be responsible when it comes to saving energy and recycling so please switch off lights and equipment after use, and use the recycling bins on site.

📍 Green Week

Every February we have Green Week, which includes a wide range of sustainability-related activities across the University, including practical workshops, talks and debates.

🔗 [Find out more about sustainability at UAL](#)



Making the most of UAL

As a UAL student, you have special access to collections, archives, institutes, digital tools, employability support, international opportunities, events and more.

University archives, museum and special collections

Our libraries have outstanding physical and digital collections in art, design, communication, fashion and performance. These collections include historical archives and special collections such as zines, material samples and artists' books.

You can also access the University Archives and Special Collections Centre at LCC which specialises in material on printing, graphics and film, including the famous Stanley Kubrick Archive. Other collections in the University include the LCF Archive and the Museum & Study Collection at CSM.

🔗 [Find out more about collections and archives](#)

Institutes

Launched in 2019, UAL Creative Computing Institute (CCI) was the first of several new Institutes. We've also established the Decolonising Arts Institute and Social Design Institute.

CCI offers innovative and diverse courses, research opportunities and a public platform to explore computer science and creative practice. This includes a range of undergraduate and postgraduate courses such as BSc, MSc and MRes Creative Computing, MSc Data Science and AI for the Creative Industries and the new MA Internet Equalities and MA/MSc Computing and Creative Industry (Modular), plus an integrated research environment for MPhil/PhD students. There are also opportunities to take short and online courses alongside your current studies.

UAL Diploma in Creative Computing (year in creative computing)

By taking an extra year of study at CCI between years 2 and 3 of your UAL undergraduate degree, you'll have the opportunity to study with other undergraduates from across UAL in a specialist environment.

The year in creative computing will enhance your UAL degree with the computational skills shaping the future of the digital creative industries. On successful completion of the diploma and the final year of your undergraduate degree you will graduate with an enhanced degree title, for example BA Hons, Design (with Creative Computing).

🔗 [Find out more about CCI](#)



Making the most of UAL

Portfolio

Get creative with UAL's showcasing platform Portfolio, where you can present your work alongside other UAL students from various subjects. You can create a profile from the start of your course and update your projects right through to 2 years after graduation.

Portfolio enables you to show the world your work and projects, share your creative skills and interests, as well as connect and network with peers from across UAL.

🔗 [Find out more about Portfolio](#)

Virtual tours

Our Colleges have an extensive range of professional workshops and facilities on offer. Things might look a little different this autumn, but you can get an idea of our shared spaces, studios and workshops by taking one of our virtual tours.

🔗 [Find out more about virtual tours at UAL](#)

For full access and route guides visit

🔗 accessible.co.uk

Careers and Employability

You might want to work during your studies to earn some extra money and gain experience. UAL can help you with your job search and application process.

We empower our students to make a living doing what they love and strive to support those underrepresented in the creative industries.

Working collaboratively with UAL courses, we enhance students' employability and creative attributes through experiential learning and access to industry. From the moment you arrive, you can:

- Find paid jobs, internships, competitions and volunteering opportunities on Creative Opportunities. For temporary roles, you can use UAL's in-house temping service, Arts Temps.
- Work on any skills you might need to get a job, freelance, or start your own business using our online resources.
- Use our practical guides and workshops to take you through everything from CV writing and tips for interviews to pricing your work and coming up with a business plan.
- Attend industry-specific talks and events which take place throughout the year.

- Access funding to help you as a designer or artist, or to start a business, as well as providing opportunities to show your work at various exhibitions and trade fairs.
- Benefit from having a mentor by your side to help you transition into professional working life.
- Learn about your Intellectual Property by making use of our IP Education resources.

UAL does not have its own service for students who want to do voluntary work; however, students interested in volunteering opportunities could consider those offered by the Mayor of London's office or those promoted on the Creative Opportunities board. If you're an international student, make sure you follow the restrictions of your visa.

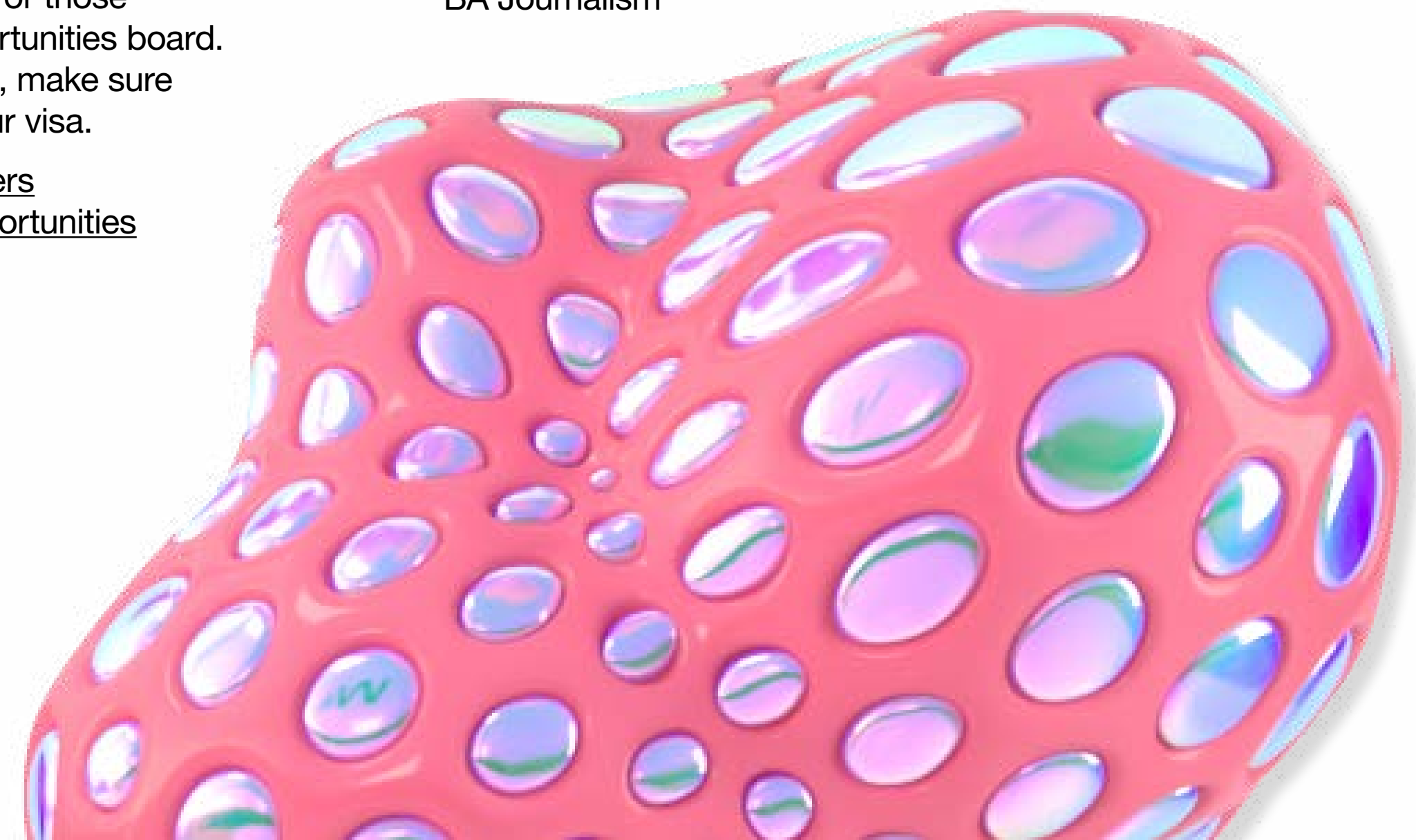
🔗 [Find out more at student careers](#)

🔗 [Find out more at Creative Opportunities](#)

🔗 [Find out more at Arts Temps](#)

“I was asked to help at the 2019 British Podcast Awards as assistant producer. It was an incredible work placement that taught me so much about the audio world of journalism.”

Laura Scheepers
BA Journalism



Making the most of UAL

International opportunities

In a global society, studying and living in a new country changes everything – especially you and your world view.

We offer opportunities to spend one or more terms studying outside of the UK at a partner institution or on a work placement abroad.

🔗 [Find out more about student mobility](#)

Events

There are loads of events you can get involved in to make the most of your time here. From summer degree shows to seminars, workshops, talks and symposiums, there really is something for everyone in our schedule.

🔗 [Find out more about what's on](#)

Social Programme

The Social Programme is an award-winning events and wellbeing programme led by students, for students. There are around 30 Halls Reps who run free and low cost events for students in halls of residences and sometimes across the wider University.

Weekly events include yoga, afternoon tea and film nights as well as monthly quiz nights and much more.

🔗 [Find out more about the latest event schedule](#)

📘 @UALsocial

📷 @UALsocial

🐦 @UALsocial



Mariana Charuto, 2021 BA Production Arts for Screen, Wimbledon College of Arts, UAL

Get support

Student Services

In addition to high-quality teaching, modern facilities and creative space for you to explore your ideas, skills and unique vision, UAL can provide you with support for your studies and wellbeing. Our Student Services staff provide a professional, confidential and free service to all UAL students.

🔗 [Find out more about Student Services](#)

+44 (0)20 7514 6250

Student Advice

Get support with financial and immigration questions and advice on any problems that may occur in day-to-day life.

🔗 [Find out more about Student Advice](#)

Immigration and visas

Students who are from countries outside of the UK will need visa or immigration permission allowing them to live and study in the UK.

🔗 [Find out more about immigration and visas](#)

Student fees and funding, including scholarships

The Student Advice and Funding Service provides students with information and advice about funding options available to cover tuition fees, living costs and course costs. You can also find out more about scholarships, bursaries and awards.

🔗 [Find out more about student fees and funding](#)

Disability and dyslexia

The Disability Service provides advice and support for disabled students and students who are dyslexic or have any other specific learning difference. Support is available at any point throughout your time at UAL.

🔗 [Find out more about The Disability Service](#)

Accommodation Services

Whether you choose to live in one of our halls of residence or in a privately rented home, our Accommodation Services team can help you find a suitable place to live throughout your time at University.

🔗 [Find out more about Accommodation](#) and 🔗 [Halls Life](#)

+44 (0)20 7514 6240

✉ accommodation@arts.ac.uk

🐦 @UALhalls

📘 @UALAccommodation



Visit a Helpdesk

UAL Student Centre

1st floor, 272 High Holborn, WC1V 7EY
Monday to Friday 9am - 5pm
+44 (0)20 7514 6900

London College of Communication

Student Services, WG 09
Elephant and Castle, SE1 6SB
Monday to Friday 9.30am - 4.30pm
+44 (0)20 7514 6590

Central Saint Martins

Student Centre, Reception
1 Granary Square, N1C 4AA
Monday to Friday 10am - 5pm
+44 (0)20 7514 7199

✉ CSMstudentcentre@arts.ac.uk

Camberwell College of Arts

Student Centre, A1C01
45-65 Peckham Rd, SE5 8UF
Monday to Friday 9.30am - 4.30pm
+44 (0)20 7514 6326

Academic support

Academic Support

At UAL we consider studying and learning to be creative practices. This is a core influence on your holistic development and experience of your chosen course. Academic Support Online is the place to go to find all classes, tutorials, resources and discussion spaces that will help you extend and progress your work, together with links to libraries, Learning Zones and digital tools.

Academic Support tutors are based in your College and across the University, and work closely with course teams and Language Development, Library and other Student Support staff. Academic Support tutors will be introduced to you during inductions.

Visit our website to find resources, and to register for group and one-to-one support sessions in your College and across UAL. You can also find more information through Moodle.

Contact us if you can't find what you need:
✉ academicsupport@arts.ac.uk

Extenuating Circumstances

Extenuating Circumstances are things which are unexpected, significantly disruptive and beyond your control, which may affect your ability to meet assessment and course deadlines. If you're concerned about your grades or think you might be eligible for Extenuating Circumstances, your course leader should be the first point of contact.

🔗 [Find out more about Extenuating Circumstances](#)

Library and Learning Zones

As a UAL student, you have access to all 6 College libraries. You can use your ID card to borrow from our inspirational collections and your UAL login to access our specialist online collections. Search the 🔗 [online catalogue](#) to order books from other libraries and collect at your site.

Our libraries have bookable study with computers, photocopying and printing facilities. You can also borrow a laptop and get help from the library staff to develop your research or digital skills.

Our Learning Zones and IT areas are for social and activity-based study in an informal

environment and are open to all students. This includes the 24/7 Learning Zone at Camberwell open all year round and 24-hour opening at CSM from Monday - Thursday, which is available during certain weeks in term time.

🔗 [Find out more about our opening hours](#)

We will tell you more about the library facilities when you attend an introduction during your first term, with other sessions offered later in your course. You can also find our workshops and tutorials on 🔗 [Academic Support Online](#)

Remember, the library staff are here to help, so ask at our desks or online using 🔗 [live chat](#) if you have questions.

Find out more about 🔗 [library services](#), including support available for disabled and dyslexic students.

Moodle

This is the online home for your studies where you will find information, resources and online activities relating to your course of study. Your tutor may also use Moodle to communicate additional news or information about your course. Your course site will have important announcements and assignment details and should be checked regularly.

🔗 [Login to Moodle](#)

🔗 [Find out more about Moodle](#)

“Be proactive and take advantage of all the facilities. There are so many workshops and opportunities to learn new skills, create and be creative.”

Marie-Lilien Funk
BA (Hons) Design Management



Get connected

Wi-Fi access

Connect to UAL-Wi-Fi using your UAL username or email and password.

IT help and support

IT Services look after all the digital stuff at UAL including your account, your email, computers, printing and online security.

If you get stuck or need help with an account or system, call the IT Service Desk on +44 (0)20 7514 9898.

They're available 24/7, 365 days a year.

You can also raise a support ticket on [MySupport](#) or non-urgent enquiries

[Find more support at IT Services](#) or use the IT support tile on MyUAL

Printing

You'll find printers at multiple College locations, including all Libraries and Learning Zones. There are many ways to print - you can even print from your own mobile device or from an off-site location!

Printing costs vary depending on size and colourway. You can top-up online by card at ualprint.arts.ac.uk or by using the machines at College Libraries. There's also a handy 'Print credits' tile on [the MyUAL app](#).

[Find out more at printing at UAL](#)



Stay informed

As well as following our social channels, we have a number of ways for you to know what's going on. We'll keep you informed in the following ways:

UAL Portal

The UAL Portal is where you can access key information regarding your application, enrolment and assessments throughout your studies with UAL. You can view your personal information and download status letters under 'My Study Details'.

It is also important that you update us immediately if there are any changes to your contact details.

🔗 [Find out more about the UAL portal](#)

Student news

We've got a dedicated news feed just for you! Here, we'll publish news, opportunities, and articles to help you in your time at UAL.

🔗 [Find out more about the latest news from your College](#)

UAL text alerts

Occasionally we'll need to tell you about something important, such as building closures or other incidents. In this case, you'll receive a text to your mobile phone with the key information.

UAL Post-Grad Community

Our Post-Grad Community was established in 2013 and now more than ever, community is a hugely important part of our lives. As well as providing a support network for our MA and PhD students we also offer access to cross-College and cross-disciplinary opportunities and events. This leads to an informed, connected and confident network of creative professionals who continue to inspire each other throughout their careers.

A programme of events encourages skills-sharing, networking, collaboration and new communities of practice. Events take place at UAL and further afield, and include talks with industry specialists, visits to artists' studios, curator-led tours and student-led activity.

We support a growing number of issue specific, cross-disciplinary interest groups led by postgraduate students and academics. These connect creatives with shared research interests across different subject areas.

The weekly newsletter shares details of events, opportunities, student articles and open calls for collaboration. You can also join the community across the Post-Grad Community's thriving social networks.

🔗 [Find out more about Post-Grad Community](#)



Tatiana Muringani, 2021 MArch - Architecture, Central Saint Martins, UAL

Wellbeing

UAL is here to support you no matter how big or small a problem. If you're worried about something, feeling emotional or just want to talk, we want to help. Contact our support services - including counselling, health advice and more.

🔗 [Find out more about wellbeing at UAL](#)

Mental health

Our free and confidential help with emotional or course-related issues can keep you from feeling overwhelmed. Check out our Counselling Service.

+44 (0)20 7514 6251
✉ counselling@arts.ac.uk

Health advice

Our health advisers offer one-to-one sessions to discuss lifestyle (including alcohol, drugs and smoking), sexual, physical and mental health. You can also find out about other services like registering with a GP and visiting a dentist in London.

+44 (0)20 7514 6251
✉ studenthealth@arts.ac.uk

Chaplaincy

Our Chaplains are also on hand to offer faith-based support. Get in touch:

William Whitcombe
+44(0)7872 816157
✉ w.whitcombe@arts.ac.uk

Mark Dean
+44(0)7843 329587
✉ m.w.dean@arts.ac.uk

English Language Development

If English is additional language for you, we offer one-to-one tutorials, weekly subject-specific classes and workshops to build your English skills. These classes will help you to understand the different types of assignments and become more confident in your studies.

🔗 [Find out more about Language Development](#)
✉ languagedevelopment@arts.ac.uk

Modern Languages

You can also study a modern language course at the Language Centre, incorporating language learning with arts and culture topics from different countries. Our modern languages courses are open to University students, staff and members of the public.

🔗 [Find out more about modern languages](#)



Arts SU and you

Arts Students Union (Arts SU) is run by students for students. It's an independent, member-led organisation that is directed by you and students elect our full-time officers each year. While we have central office on the first floor at High Holborn, you can also find Arts SU at your College. Our dedicated team of staff and students bring Arts SU services and general fabulousness direct to your campus.

Chat to us about events, campaigns, academic representation, independent advice, leadership or creative opportunities, getting funding for projects and more. Your elected Student Officers are here to represent you. Their roles cover different parts of the student experience, so please do get in touch!

Find out more at [🔗 arts-su.com](https://arts-su.com)

Students' Union Officers

Armani Sutherland

Activities Officer

✉ activities@su.arts.ac.uk

Rachel Williams

Education Officer

✉ education@su.arts.ac.uk

Syahadah Shahril

Campaigns Officer

✉ campaigns@su.arts.ac.uk

Georgia Spencer

Welfare Officer

✉ welfare@su.arts.ac.uk

🔗 [Find out more about your union](#)



Esma Yildiz, 2021 BA Fashion Design Technology - Menswear, London College of Fashion, UAL

Making the most of Arts SU

Activities and Wellbeing

With over 40 societies and 17 sports clubs available to join, Arts SU can help you find your community. We offer both competitive and non-competitive sporting opportunities, with some teams competing in the national (BUCS) and London (LUSL) leagues, and others just offering social sport opportunities. Our clubs and societies are one of the easiest ways to meet people that share the same interests and passions as you, from across all 6 Colleges.

For those students already competing at a high level, we offer an Elite Athlete Programme. This is designed to support the very best student athletes in any sporting discipline competing at a national or international level, to help balance an academic and sporting career.

Our wellbeing programme, Arts Active, is also open for you to join. Recently we have been offering sessions covering creative writing, yoga, creative power hour and mindfulness.

🔗 [Find your community through our programmes](#)

Advice Service

Arts SU Advice Service offers free, confidential advice, which means we won't tell your College you have talked to us (unless you want us to) and we are completely independent from the University.

We can help you with academic processes such as Extenuating Circumstances, appeals and complaints, as well as accommodation issues.

You can talk to us by booking an appointment for a time that suits you or visiting our website to find out where we are.

🔗 [Find out more about our Advice Service](#)

Course Representatives

Course Reps are students who volunteer to represent their course at University meetings. They have a lot of influence over issues like curriculum design, facility access, opening hours and their efforts ensure students are heard. It is a great opportunity to work directly with the Students' Union and UAL staff members to support the student experience and develop a variety of skills yourself as a representative.

Each course will elect their course reps in the first few weeks of term. Talk to your course leader to find out how you can get involved.

Made in Arts London

Arts SU runs Made in Arts London (MiAL), a uniquely student-led enterprise. MiAL student artists can sell pieces online, exhibit in galleries, attend training workshops and support and learn from each other. UAL also offers numerous and varied professional development opportunities and mentorships throughout the year to all* current UAL students.

🔗 [Find out more about creative opportunities](#)

*Students who are on Tier 4 visas, or any other visas with a work restriction are not allowed to be self-employed, freelance, or sell work to have an income.



Living in London

It's easier to think of London as lots of tiny towns rather than one big city. Every area in London has a different ambience, atmosphere and local vibe and before long, you will have your favourites. London can be both an exciting and challenging experience.

This section will give you an idea of what it's like to live here, along with some useful tips about daily life to help you make this diverse and vibrant city your home.

Register with a doctor

You should register with a doctor near your new home so you can get to them easily if you need medical attention. Visits to the doctor and emergency treatment are free for those registered with the NHS, however, you will be required to pay a fee for any medication, or treatment for any pre-existing conditions.

Open a student bank account

You can do this by going into a bank branch of your choice – we'd recommend going to one close to your new home in London. If you're not from the UK, you'll need to bring a copy of your visa and a valid passport.

Get Council Tax exemption

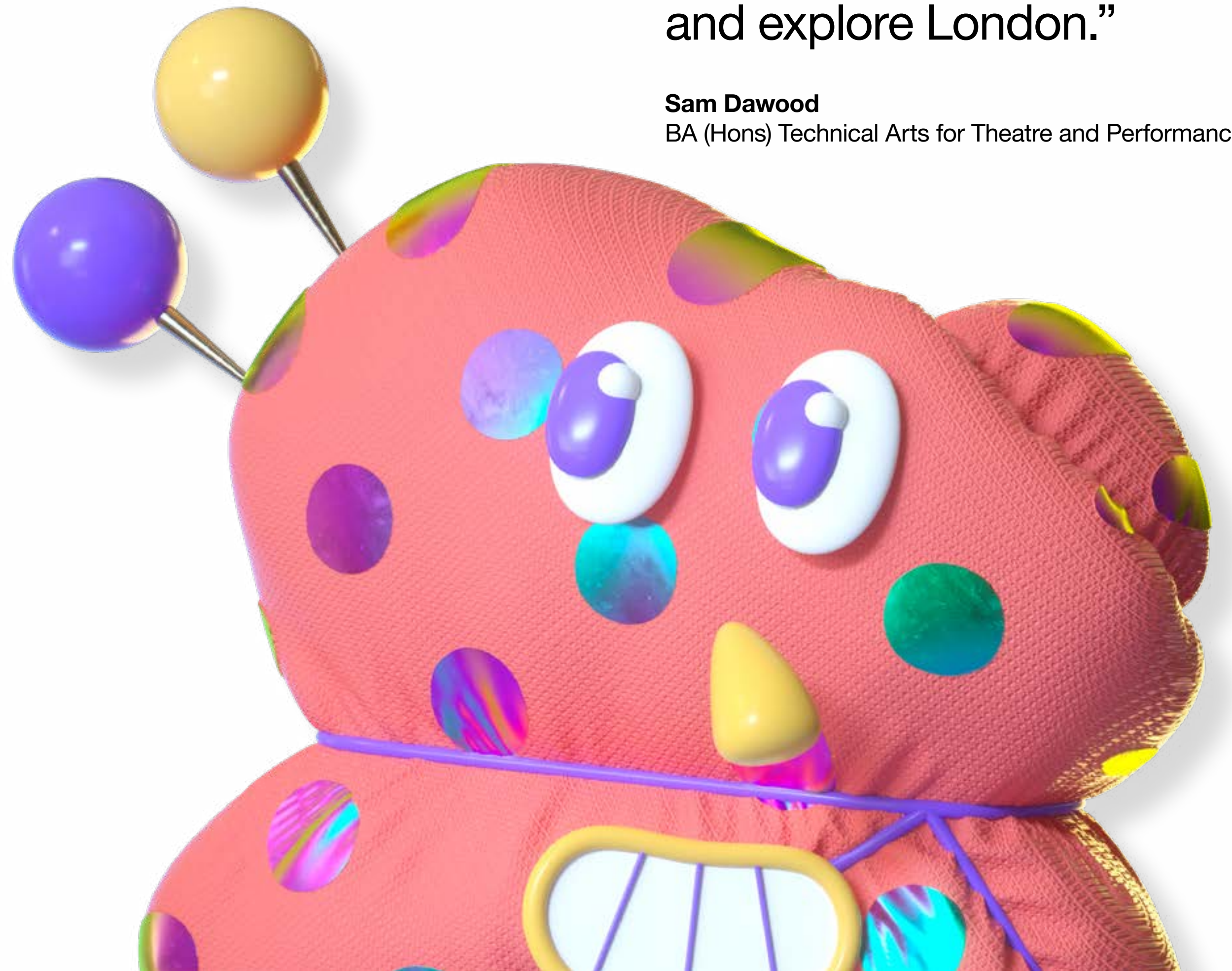
Full-time students on most courses do not have to pay 'Council Tax', a fee that residents pay to the local government for waste collection, recycling and general maintenance. If you're renting privately, to avoid receiving a Council Tax bill, you can request a Council Tax Exemption Certificate after you enrol on your main course.

🔗 [Find out more about Council Tax exemption](#)

“Go and visit the other Colleges and explore London.”

Sam Dawood

BA (Hons) Technical Arts for Theatre and Performance



Travel

Travelling around London

London has one of the largest transport networks in the world and once you get used to it, you'll find it easy to use. With multiple ways of getting around, the best thing to do is plan your journey by using ↗ [Transport for London's \(TfL\) 'journey planner'](#), available on its website or as an app. Alternative apps to help you find your way around London are ↗ [Citymapper](#) and London Transport.

Remember to follow current COVID-19 guidance when using public transport.

Underground trains

The most popular method of travel is the London Underground, also known as the Tube. It's the quickest way to travel in and around London and has 11 'lines', some of which are open 24 hours on weekends. Tip: Travelling outside the busiest hours (known as 'peak time' between 6.30am to 9.30am and 4pm to 7pm on the weekdays) is cheaper and less crowded.

Buses

Buses cover all zones of London, and you can get from one zone to another for a set fare. You can also travel on more than 1 bus for the same fare, but you must complete your journey within an hour. It's a convenient way to get to know your surrounding area but you should factor in traffic on the roads when planning your journey. Some buses work 24 hours, with most stopping around midnight.

Ways to pay

There are a range of ways to pay for your travel and the cheapest method depends on where you live and which transport you'll use most often. London buses do not accept cash payments but you can pay with a variety of cashless methods.

Sign up for a Student Oyster card

Students are eligible for discounted travel with a Transport for London (TfL) Student Oyster photocard. With a Student Oyster photocard, you will save 30% of the price of a Travelcard and Bus Pass, available to buy for daily, weekly and monthly use.

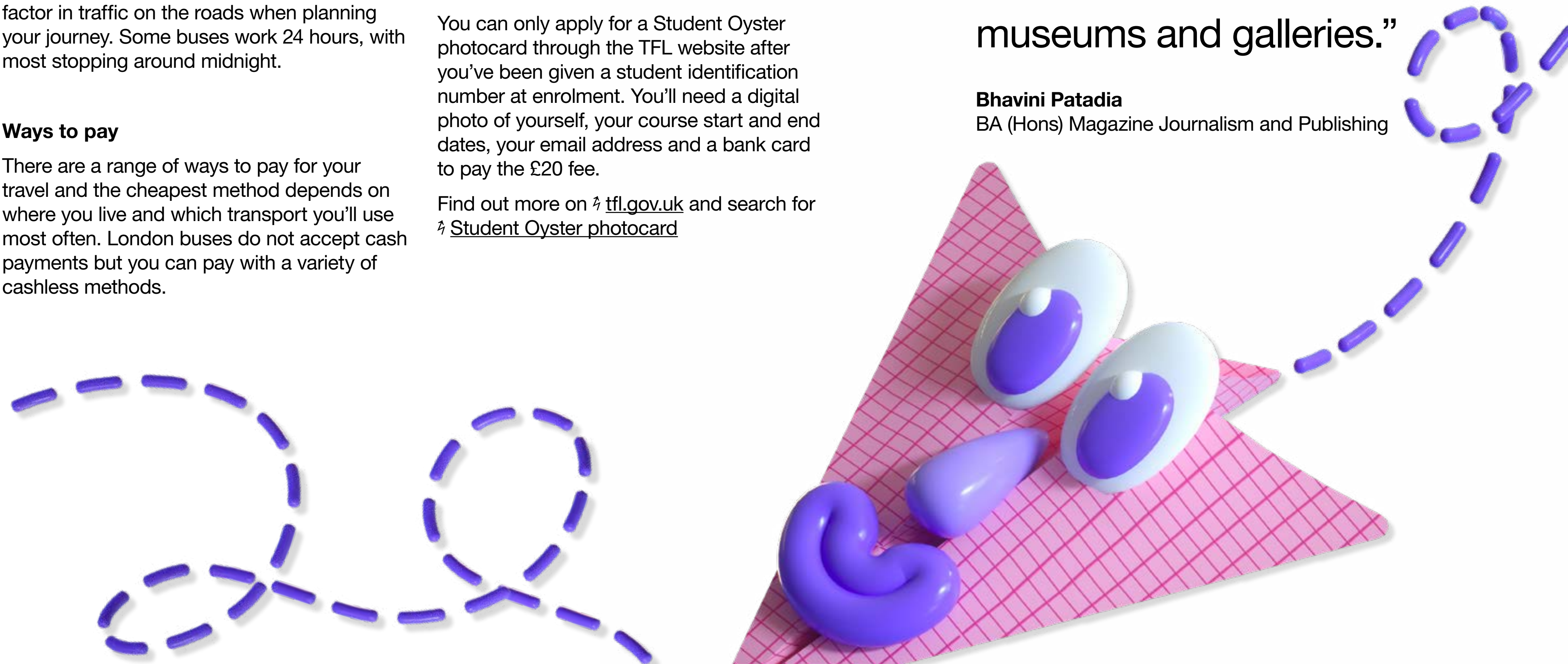
You can only apply for a Student Oyster photocard through the TfL website after you've been given a student identification number at enrolment. You'll need a digital photo of yourself, your course start and end dates, your email address and a bank card to pay the £20 fee.

Find out more on ↗ tfl.gov.uk and search for ↗ [Student Oyster photocard](#)

“One of the best things about UAL is its location. You can travel easily in London to visit lots of museums and galleries.”

Bhavini Patadia

BA (Hons) Magazine Journalism and Publishing



Travel

🚶 Walking

The best way to travel in London is walking. Start somewhere central like Oxford Circus and walk in any direction, and before you know it you will reach another Tube stop you recognise. You'll be surprised how small central London really is. If you get lost, Google Maps and other similar apps will help you find your way.

🚴 Cycling

Cycling is an affordable and healthy way to travel around London. If you don't have your own bicycle, you can hire one from as little as £2. Simply go to any docking station in London with your bank card and touch the screen to get started. There's no need to book - hire a bike, ride it to your destination, then simply return it to the nearest docking station.

TfL also offers free Cycle Skills lessons, advice on how to protect your bike and has some great guides for when you're ready to take to the road.

Travelling around the UK

You might want to travel to other parts of the UK while you're here and you can do this with:

- Coaches: often the cheapest way to travel as sometimes you can get a ticket for as little as £1 when you book in advance.
- Trains: can be expensive so it's best to book in advance using websites like 🌐 [Trainline](#) to compare prices. You can get more information about train travel in the UK on the 🌐 [National Rail website](#).



Phoebe Carraro, 2021 BA Fine Art Sculpture, Camberwell College of Arts, UAL

Save money

Money-saving tips

There are lots of ways to save a little extra money during your time in London.

You can buy a TOTUM card which will save you money at over 200 places, including fashion, electronics and food retailers, as well as entertainment and travel. It also includes an International Student Card that can be used abroad. Shops don't always advertise the discount, so always ask if they offer student discounts.

🔗 totum.com

Student Art Pass

Get your Student Art Pass and discounted entry to museums and exhibitions across the UK.

🔗 [Find out more about Student Art Pass](#)

Local discount scheme

As a student, you might be able to get discounts depending on the area you chose to live in. Discounts are offered by the Borough Council (which looks after the area you live in) and can be used for local sport centres/gyms, restaurants and events. Search your council's website to see what discounts they offer to residents.

📱 Online discounts

Websites such as 🔗 [VoucherCloud](#) and 🔗 [Groupon](#) have lots of offers and are great for treating yourself to anything from a massage to a meal. Buy a reusable cup and get discounts in many coffee shops as well as being more sustainable!

🔗 [Find out more about student discounts and info about additional and living costs, as well as budgeting advice](#)



Stay safe

We want UAL to be a safe place for all students, staff and visitors, so we take health and safety very seriously. You'll be given detailed safety information during your course induction, like fire and emergency procedures and rules for using machinery in a safe and sensible way.

This year, we've also made specific arrangements for social distancing and continue to provide students and staff with all the important information and guidance about the Coronavirus pandemic.

UAL Health and safety

Evacuation assistance

If you need assistance to evacuate a building in an emergency, your course leader will make sure a Personal Emergency Evacuation Plan (PEEP) is completed with you. Your PEEP will describe what you need to do in an emergency and what assistance will be provided by other people.

Risk assessments

During your studies you may need to complete a risk assessment for your work. This is an important part of planning your work, identifying any hazards, keeping you and other people safe. You can find the general risk assessment form in your course handbook and on Moodle. You can speak to your tutors or the College Health and Safety Advisor for more information, or if your work is complex.

Safe working

When you start with us, we will give you an induction to the site and safe working practices while on and off site as well as an overview of how social distancing may impact the way you use our buildings. Your course team will be able to give you information about safe working at home.

For your own safety we ask that you don't work alone in our rooms and that there should always be at least 3 people in a room at any time. This is really important because if an accident happens, one person can stay with the injured person and the other can go for help. You're not allowed to use high-risk areas unless you have direct supervision from a technician.



Katy Philpot, 2021 BA Photography, London College of Communication, UAL

Stay safe

Hazardous substances

There are a number of activities, processes and pieces of equipment at UAL that are potentially hazardous. We take action to limit these hazards as much as we can, but we will also expect you to follow the instructions and safety rules when using ladders, lathes, milling and cutting machinery, electrical equipment and chemicals. We may also ask you to wear protective equipment such as ear defenders or safety glasses, or to use other safety equipment like equipment guards. You will be told about these requirements at your workshop and studio inductions. If you have any questions or need advice, please speak to your tutor or one of the technicians.

🔗 [Find out more about student health and safety](#)

London is generally a safe city to live in, but like any new place, you should take time to learn how to look after yourself and your belongings. Here are some top tips:

- Keep your purse or wallet close to your body and don't carry too much cash.
- Keep all valuables out of sight when out and about, especially when in crowded places.
- Carry your laptop in a rucksack rather than a laptop bag so it's not easily seen.
- Register your pocket electronics (phone, iPad, iPod) for free on 🔗 [immobilise.com](#) so if they get stolen and police have to search for them, they can check the serial number and track you as the owner.
- Plan your route before you leave; the Transport for London website 🔗 [tfl.gov.uk](#) is a good place to start.
- Avoid walking alone at night; keep to well-lit main roads or take a taxi for longer distances and only use registered taxis or minicabs.

- Report any incidents, suspicious activity or stolen belongings to the police. Dial 101 for your nearest police service or 999 in an emergency.
- NHS 111 can help if you have an urgent medical problem and you're not sure what to do. Go to an Accident and Emergency (A&E) department at your nearest hospital if you have a serious injury or illness.
- Students are sometimes targeted online by people using scams and trying to access personal information and bank details through things like email.

🔗 [Find out more about staying safe in your accommodation, on transport and online](#)

