

ual:

London College of Fashion

Welcome guide



Contents

→ LCF guide

- 04 Meet your Head of College
- 05 Need to know
- 11 ID cards
- 12 Spaces and resources
- 15 Health and safety
- 16 Student support
- 17 Making the most of LCF

→ UAL guide

- 21 Introduction
- 24 Need to know
- 25 Our culture
- 27 Making the most of UAL
- 30 Get support
- 31 Academic support
- 32 Get connected
- 33 Stay informed
- 34 Wellbeing
- 35 Arts SU and you
- 36 Making the most of Arts SU
- 37 Living in London
- 38 Travel
- 40 Save money
- 41 Stay safe








This guide is designed to help you settle into your new life as a student at London College of Fashion (LCF), University of the Arts London (UAL). In this half you'll find information specifically about London College of Fashion and in the other half you'll find information for all UAL students.

The information included within this guide was correct at the time of publishing. However, due to COVID-19, access to our sites and services may change. Please visit www.arts.ac.uk/students/the-big-welcome for the latest information and advice.

How to use this guide

-  This means you can find out more online
-  This means there is an email address
-  This indicates information about sustainability

Connect with us

London College of Fashion

20 John Princes Street
London
W1G 0BJ






+44 (0)20 7514 7400

-  @LCFOfficial
-  @LCFLondon
-  @LCFLondon
-  London College of Fashion

University of the Arts London

272 High Holborn
London
WC1V 7EY

+44 (0)20 7514 6000

-  @UniversityoftheArtsLondon
-  @unioftheartslondon
-  @UAL
-  universityoftheartslondon
-  University of the Arts London

Illustrations by Jack Sachs, 2013 [BA Illustration](http://www.jacksachs.co.uk),
[Camberwell College of Arts](http://www.jacksachs.co.uk), UAL
[jacksachs.co.uk](http://www.jacksachs.co.uk)

Roni Brown

Welcome to London College of Fashion (LCF), University of the Arts London (UAL), where we have provided specialist creative education for over 110 years.

The subjects we teach at London College of Fashion, UAL, are immensely broad – from filmmaking and jewellery design, to entrepreneurship, fashion illustration and cosmetic science – but across all of our courses, we teach students to collaborate and look beyond the traditional notions of fashion in order to question, challenge and innovate the industry from within. Since I started as Head of College in December 2019, I've been constantly impressed by the depth of research and commitment to originality in the work of our students and how students use their personal experiences and background to comment on the world around them.

Our students are changing the world: not just by designing with an awareness of environmental and societal issues, but also by connecting and innovating to blend fashion technology and the expertise of other sectors to create forward-thinking outputs.

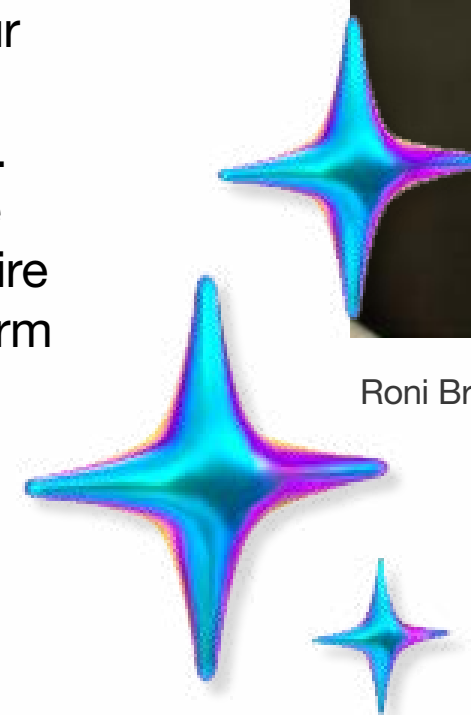
We know that a creative education nurtures graduates who are sought after across all industries for their problem-solving approach, and that the creative industries in the UK are one of the fastest growing sectors of the economy. We have a dedicated focus through our Graduate Futures team to support graduates with their careers, whether in setting up their own business or becoming part of an established organisation. Our connection with employers in the fashion industries is outstanding.

We can't wait to meet you and discover your ideas – the very ideas that will help shape the London College of Fashion of the future. We hope your experience with us will be life changing and the people you meet will inspire you and form the basis of deep and long-term connections.

Roni Brown
Pro Vice-Chancellor and
Head of London College of Fashion



Roni Brown, 2020, UAL | Image: still from LCF Learning Technology Support video



Need to know

Shaping lives through fashion

We believe in using the subject of fashion to shape lives and drive change. You can find out more about this in the Better Lives section later in this guide. We have 4 ‘pillars’ that underpin who we are:

Fashion means business

Through inspirational teaching we nurture you – the next generation of creative leaders and thinkers – to work in responsible, analytical and ingenious ways. Our strategic commercial partnerships support local and global businesses and both you and the industry as a whole benefit from our connections.

Fashion makes style

In design, you’ll learn about heritage and radical thinking: craftsmanship and new technology; engineering and in-depth design research. We teach innovative ideas first and your innovative practice brings them to life.

Fashion tells stories

We nurture your distinctive voice, teaching you how to challenge and define the future of fashion through cutting edge approaches across all media channels: broadcast, print, digital, interactive and experimental.

Fashion looks forward

Through research, collaboration and experimentation, we explore the frontiers of design and technology, merging them to transform how fashion is made, showcased and sold. And with innovation, help forge a global fashion economy that supports our students and the wider industry – now and in the future.



“As everyone is part of a creative community, I like the fact we can bounce off each other.”

Harmeet Juttla
BA Bespoke Tailoring

Need to know

📍 Our move to a new single campus

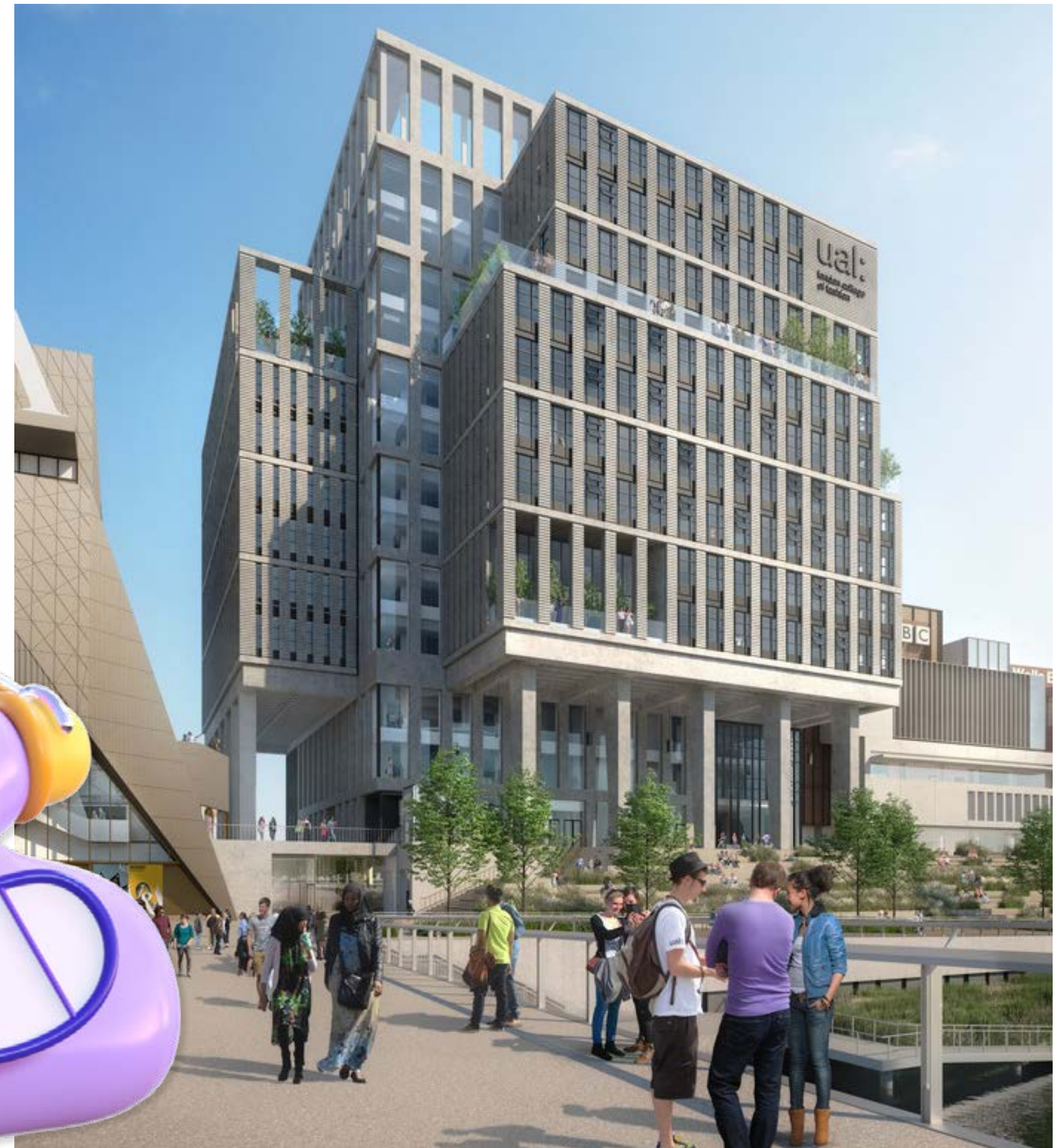
LCF will be moving to the Queen Elizabeth Olympic Park in east London in 2023. This will represent a unique opportunity for us to come together as a community in one building for the first time in our 110-year history, and to shape our environment in a purpose-built site.

Our neighbours will be Sadler's Wells, BBC, and a collaboration between the Smithsonian Institution and Victoria & Albert Museum, with University College London (UCL) and Loughborough University nearby. We are already building collaborative projects with these organisations for the benefit of LCF students. For example, our Graduate Futures team works with UCL on 'Skills Builds' which students can attend to develop ideas and transferable business skills. We recently launched joint-funded PhDs with V&A and Sadler's Wells, and an MSc course in Disability, Design and Innovation in partnership with UCL through the Global Disability Innovation Hub.

The move is planned to take place in 2023, so you will most likely be studying some of your course in the new building. As the building design process continues and develops, we'll be sharing information as soon as we know it, but it is planned to be one of the largest and most sustainable higher education buildings in London, making use of natural ventilation and community energy networks.

We are working with Arts SU on student engagement for the move and we'll continue to involve students in this process - inviting you to join activities when you start here with us.

🔗 [Find out more about LCF's move](#)



Render of East Bank building at Stratford, 2018 London College of Fashion, UAL | © Ninety90/A&M

Need to know

Where to find us

John Prince's Street

Less than a minute's walk from Oxford Circus in central London, here we have the Fashion Space Gallery; courses in visual merchandising and cultural and historical studies; and one of the College's main lecture theatres.

Facilities include:

- Academic Registry
- Canteen
- Digital Anthropology Lab
- Digital Learning Lab
- Fashion Space Gallery
- Gender neutral toilets
- IT open access
- LCF Archives
- LCF Graduate Futures
- Library and study areas
- Reprographics, copying and printing
- Rootstein Hopkins Space (lecture theatre)
- Student Hub
- Student Services
- Study Support
- Quiet space

Address

20 John Prince's Street, W1G 0BJ

Nearest transport

Oxford Circus Underground

Bikes

No bike storage available

+44 (0)207 514 2075

Mare Street

Based in east London, close to Bethnal Green and Hackney Central, our Mare Street location is home to the International Preparation for Fashion course, contour, jewellery and bespoke tailoring courses, a life drawing studio and our reprographics room.

Facilities include:

- Arts shop
- CAD (computer-aided design) and CAM (computer-aided manufacturing) room
- Student Lounge/Project Space
- Digital Learning Lab
- Dye Garden
- IT open access
- Social space
- Quiet space

Address

182 Mare Street, E8 3RE

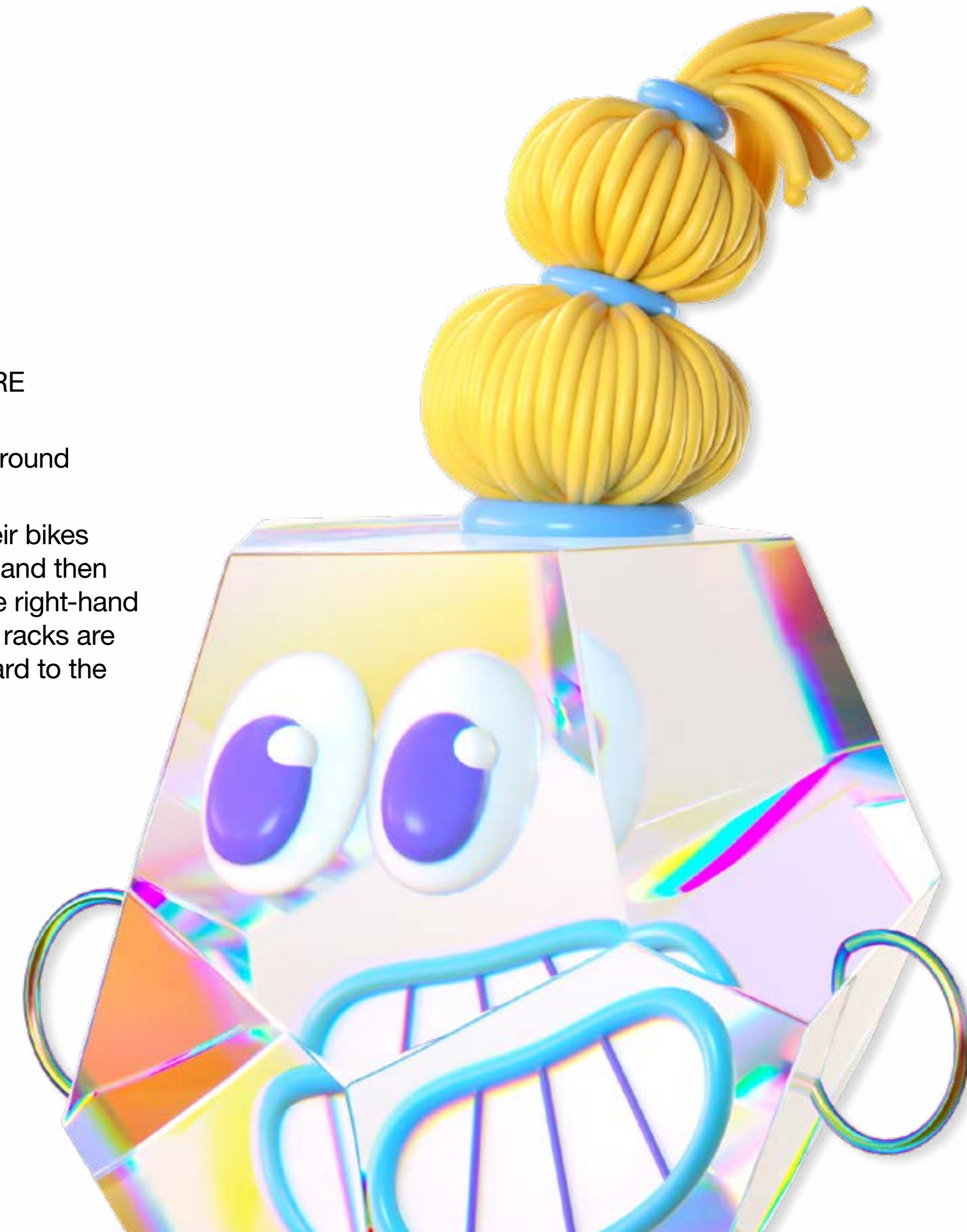
Nearest transport

Bethnal Green Underground

Bikes

Students can bring their bikes through the main gate and then through the door to the right-hand side of the foyer, cycle racks are available in the courtyard to the side of the building.

+44 (0)20 7514 8663



Need to know

Where to find us

Lime Grove

Our Lime Grove campus in west London is home to courses in visual studies, makeup, styling, knitwear, embroidery, surface textiles, fashion illustration, prosthetics, technical effects and costume studies, fashion journalism and public relations, as well as the International: Introduction to the Study of Fashion course.

Facilities include:

- Arts shop
- Canteen
- Courtyard
- Darkroom
- Digital Leaning Lab
- Gender neutral toilets
- IT open access
- Lecture theatre
- Photo studios
- Student lounge
- Quiet space

Address

40 Lime Grove, W12 8EA

Nearest transport

Shepherd's Bush Market
Underground

Bikes

Students can bring their bikes through the gate to the left-hand side of the main entrance; they then need to ring the buzzer to be let in.

+44 (0)207 514 7515

Curtain Road

Based in Shoreditch, our Curtain Road studios house most fashion design courses including menswear, womenswear, sportswear and pattern cutting.

Facilities include:

- Arts shop
- CAD (computer-aided design) and CAM (computer-aided manufacturing) room
- Fabric stockroom
- Quiet space
- Social space

Address

100 Curtain Road, EC2A 3AA

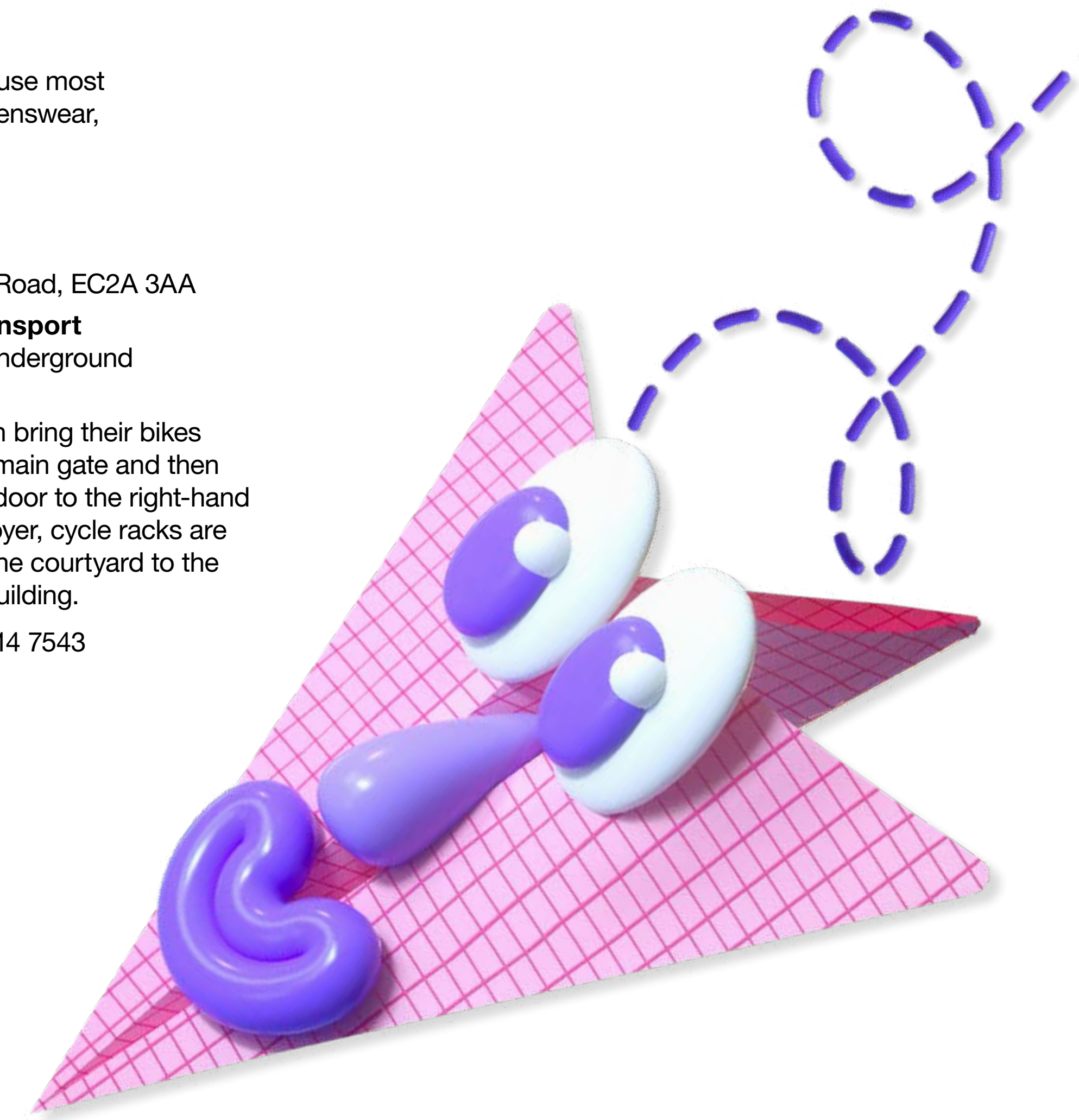
Nearest transport

Old Street Underground

Bikes

Students can bring their bikes through the main gate and then through the door to the right-hand side of the foyer, cycle racks are available in the courtyard to the side of the building.

+44 (0)20 7514 7543



Need to know

Where to find us

High Holborn

Based in central London, High Holborn is home to courses in fashion management, marketing, buying and merchandising.

Facilities include:

- Activities room
- Blueprint Café
- Gender neutral toilets
- IT open access
- Language Centre
- not just a shop
- Quiet space
- Student Services
- Students' Union

Address

272 High Holborn, WC1V 7EY

Nearest transport

Holborn Underground

Bikes

Please contact the local facilities management to arrange access to underground bike storage.

+44 (0)20 7514 6010

Golden Lane

Another campus in east London, Golden Lane is home to footwear, accessories, jewellery (with Mare Street) and artefact courses offered through Cordwainers at LCF.

Facilities include:

- IT open access
- Student lounge

Address

Golden Lane, EC1Y 0UU

Nearest transport

Barbican Underground

Bikes

Students can bring their bikes to the main entrance and find secure bike racks at the back of the building.

+44 (0)207 514 8428



Need to know

Where to find us

Quiet spaces

LCF has quiet spaces available for staff and students for prayer, personal reflection, health requirements, breastfeeding and rest.

🔗 [Find out more about quiet spaces](#)

Lockers

Due to constraints of physical space, it is not possible to provide lockers at any LCF site. Priority is given to providing state-of-the-art technical resources, study and social spaces as well as the co-location of courses on individual sites in order to minimise travel and foster collaborative working among students.

Finding your way

During your first term, you will be given tours of the buildings appropriate to your course as part of your induction. Find out more at 🔗 arts.ac.uk, search 'All LCF facilities' to take a virtual tour around our shared spaces, studios and workshops.

For full access and route guides visit 🔗 accessible.co.uk

Zoe Zanon Rives in the studio, 2020 MA Fashion: Buying and Merchandising, London College of Fashion, UAL | Photograph: Alys Tomlinson



ID Cards

You will receive a student ID card and lanyard once you have completed enrolment. LCF operates a strict no pass, no entry policy to ensure security across all sites, so please remember to bring your ID card with you every day, especially as you'll also need it for printing (find out how to do this further on in the guide).

Q: What should I do if I lose or forget my ID card?

If you forget your pass, just speak to reception who will be able to print you a temporary pass.

If you lose your card you should check with the site reception first in case it's been handed in. With your temporary pass, obtained from reception (above), you can get into the College to collect your new ID from Room 211 at John Prince's Street (Monday to Friday, 9.30am - 4.30pm). Alternatively, your ID card can be sent by internal mail to another site within LCF for you to collect. Your new card will be activated automatically next time it is used on the entrance gates – be patient, the gates take a few seconds longer to open with a new card.

Q: What should I do if my card gets stolen or damaged?

If your ID card is stolen, you'll need to present a Police Crime Number to Academic Registry (Room 211 at John Prince's Street) to receive a new card. If your ID card doesn't work then please contact Academic Registry at John Princes Street. If it is damaged, you can get a free replacement, as long as you can prove that it is damaged.

Q: Can I share my ID card with another student?

No. ID cards are issued to individual students and must not be shared. Anyone found to be using another student's ID card will have it confiscated and both involved could face disciplinary action.

Note

You can only own one ID card at a time. If you lose your ID card, the old one will be deactivated as soon as a replacement is activated. If you lose your card or it gets stolen, you should get a replacement as soon as possible to avoid other people using your old card to pay for printing or hiring out equipment which you are responsible for.

If you want your replacement ID card sent to a different LCF location, email Academic Registry with the details:
✉ student.admin@fashion.arts.ac.uk

“It's a really inspiring place.”

Jaz Martell

BA Fashion Visual Merchandising and Branding



Spaces and resources

Library

As a UAL student, you have access to all six College libraries. Use your ID card to borrow from our inspirational collections, and your UAL login to access our specialist online collections. Search the [online catalogue](#) to order books from other libraries to collect at your site.

Our libraries have bookable study with computers, photocopying and printing facilities. You can also borrow a laptop and get help from the library staff to develop your research or digital skills.

Our Learning Zones and IT areas are for social and activity-based study, in an informal environment. This includes the 24/7 Learning Zone at Camberwell College of Arts open all year round and 24 hour opening at CSM from Monday - Thursday, which is available during certain weeks in term time. These are open to all students. Find out more about our opening hours [here](#). We will tell you more about the library facilities when you attend an introduction during your first term, with other sessions offered later in your course. Your Academic Support Librarian works with your course team. They run group sessions about finding and managing information and offer one-to-one tutorials.

[You can also find our workshops and tutorials on Academic Support Online](#)

LCF is your home library. The collections reflect the teaching and research interests of the college, with a focus on fashion design, clothing technology, costume history, styling, media, business management and marketing, psychology, cosmetic science, performance, as well as footwear and accessories.

Located on the first floor at John Prince's Street the library has individual study areas, and a computer area with iMacs and PCs.

Remember, the library staff are here to help, so ask at our desks or [online using live chat](#) if you have questions.

[Find out who is your Academic Support Librarian](#)

[Find out more about library opening times](#)

[Find out more about library services](#)

[@LCF_Library](#)

[@UALLibraries](#)

+44 (0)207 514 7455

Student Hub

Located at John Prince's Street, the Student Hub is a flexible space for all LCF students. Here you can meet Graduate Futures for one-to-ones and employability and enterprise support. You can also use this space for other student activity.

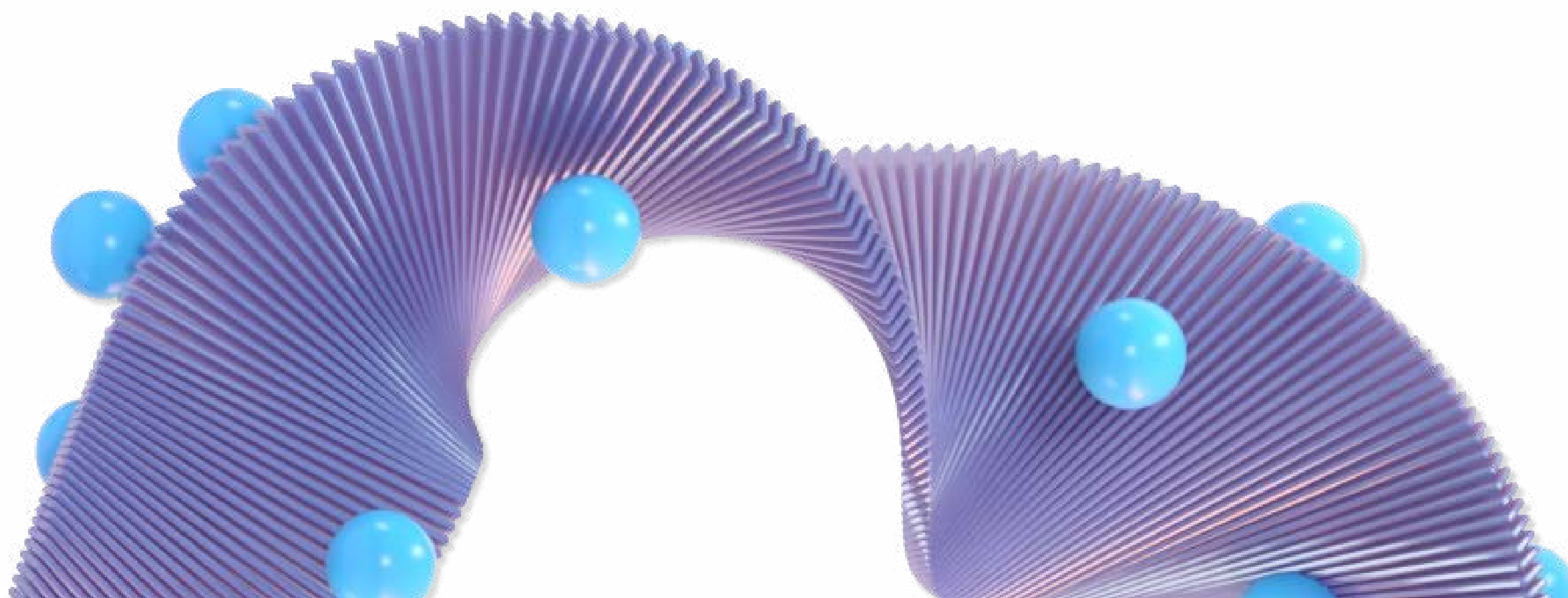
Media Lab

Based in Room C304 at Lime Grove, the Media Lab provides a variety of printing and processing resources open to all spaces and students across UAL.

“We’re always being introduced to different materials and processes, for example, using fibre glass or vacuum forming.”

Rachel Farrugia

BA 3D Effects for Performance and Fashion



Spaces and resources

Digital Learning Lab

The Digital Learning Labs (DLL) at Mare Street, John Princes Street and Lime Grove are frontier focused digital spaces with an ambitious vision to explore futures of digital for fashion. Working across academic, industry and student led agendas within the University, the Digital Learning Lab provides an experimental environment to explore emerging futures of digital experience. Each Digital Learning Lab reflects the needs of specific courses, but all the labs are available to all LCF students, no matter what school your course is in.

Facilities include:

- Wearable technology
- Body scanner
- Object scanner
- 3D printing
- Artificial intelligence and computer vision
- Physical computing and wearable technology
- Holographic computing
- Active matter
- Virtual reality and augmented reality
- Photogrammetry
- Motion capture suit
- Immersive experiences/projection mapping

Email the DLL technical team at

✉ dll@fashion.arts.ac.uk

🔗 [Find out more about Digital Learning Lab](#)

Arts shop

Arts shops sell a broad range of art, design and fashion materials. Your arts shops are not for profit, run by UAL and are staffed by graduates. The shops are stocked in consultation with course leaders and sell products according to the courses taught at each site. We work with our suppliers to provide ethically and sustainably sourced products and recycled options wherever possible.

We have arts shops at Curtain Road, Lime Grove and Mare Street.

We also have stock rooms at our Curtain Road and Golden Lane sites, offering a variety of materials, trimmings and fixings.

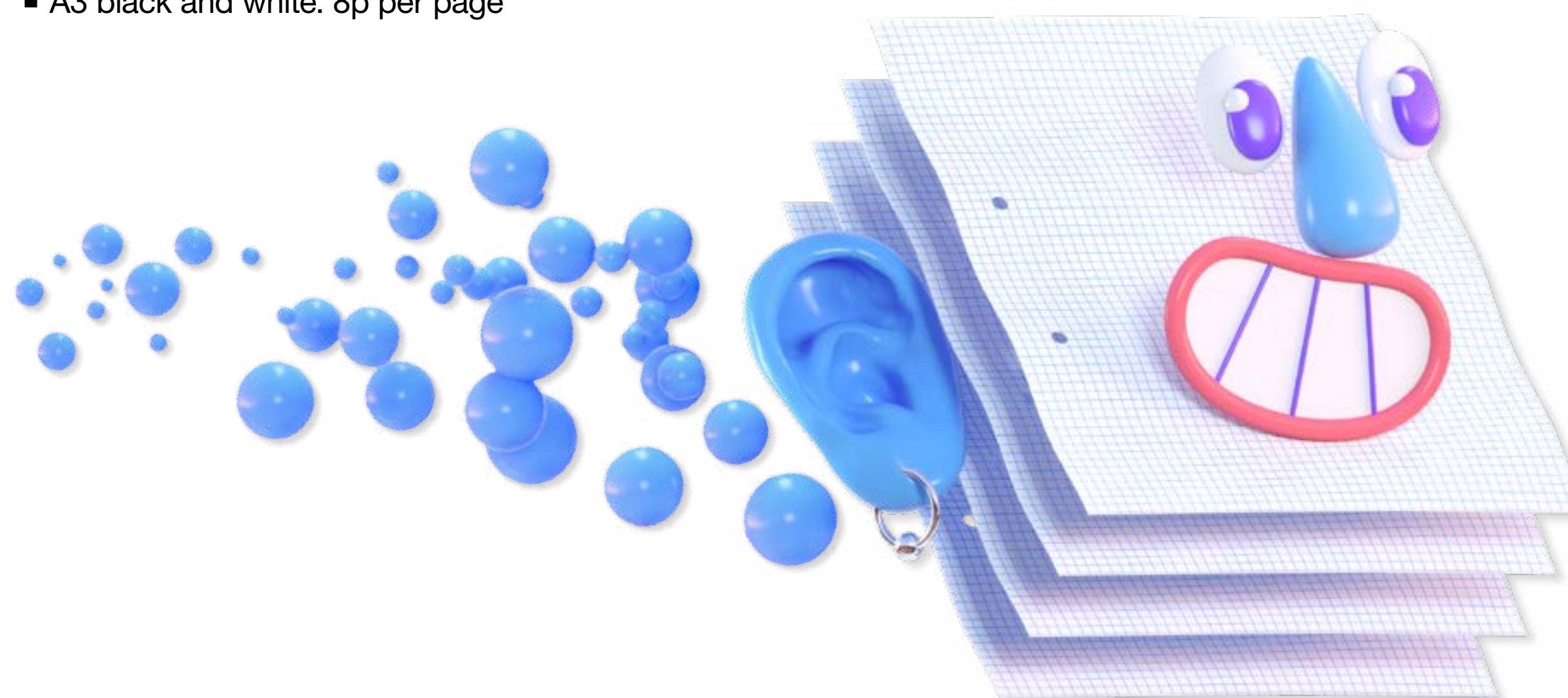
🔗 [Find out more about arts shop and to see the locations and opening times of all our arts shop](#)

Printing

You'll find printing facilities across all LCF sites including binding, photocopying, printing and laminating. To use a Multi Function Device (MFD) printer you'll first need to get some print credit. You can top-up your print credit, plus check your balance, print history and environmental impact by logging onto the online portal 🔗 [PaperCut](#).

Copying and printing charges

- A4 colour: 15p per page
- A3 colour: 24p per page
- A4 black and white: 4p per page
- A3 black and white: 8p per page



“The vast number of facilities makes me want to experiment and try new ideas.”

Jeffrey Thomson

International Preparation for Fashion
(Certificate in Higher Education)

Spaces and resources

Technicians and technical resources

Specialist technical teams play a key role throughout your time here. They will be teaching essential parts of your course curriculum and providing guidance in a range of processes from traditional craft to innovative digital practice. Technical teams also manage the various specialist resources and stores across LCF.

Visit our Facilities page online for information about our Technical teams and resources, including open access IT areas, specialist studios, workshops and equipment hire.

🔗 [Find out more about LCF Facilities](#)

Online Resources Booking (ORB)

Students can reserve equipment, book inductions, workshops and workspaces using ORB. Please use your UAL Username and Password to log in.

🔗 [Find out more about ORB](#)

If you experience any issues with ORB please visit IT Open Access at any site or contact Service Desk.

✉ servicedesk@arts.ac.uk
+44 (0)20 7514 9898



George Boyle working in the Studio, 2018 BA Fashion Design Technology: Womenswear, London College of Fashion, UAL | Photograph: Alys Tomlinson

“Don’t be afraid to challenge
not only yourself but to
challenge the system!
UAL is about one thing and
that’s YOU!”

George Boyle

BA Fashion Design Technology: Womenswear



Health and safety

Smoking and vaping

In the UK, smoking is not allowed inside public buildings so please don't smoke or vape inside College buildings. If you want to smoke or vape, please go outside and where possible stay away from doors and open windows.

Safe working

For your own safety we ask that you don't work alone in our rooms and that there should always be at least 3 people in a room at any time. This is really important because if an accident happens, one person can stay with the injured person and the other can go for help. You're not allowed to use high-risk areas unless you have direct supervision from a technician.

First Aid

You can find first aid boxes throughout our sites. Each box is clearly identified by an accompanying poster which includes information about how to contact a first aider. To contact the emergency services from an internal phone, call 5-999 and give them the site address which is on the first aid posters. Find out more about student health and safety.

Hazardous work and substances

There are a number of activities, processes and pieces of equipment at UAL that are potentially hazardous. We take action to limit these hazards as much as we can, but we will also expect you to follow the instructions and safety rules when using ladders, lathes, milling and cutting machinery, electrical equipment and chemicals. We may also ask you to wear protective equipment such as ear defenders or safety glasses, or to use other safety equipment like equipment guards. You will be told about these requirements at your workshop and studio inductions. If you have any questions or need advice, please speak to your tutor or one of the technicians.

Personal items and valuables

Don't leave your items unattended, especially in busy areas like the library and the canteen. Taking out gadget insurance for your belongings (laptops, mobile phones) is advisable – this means if your gadget is lost, stolen or unrepairable, you can replace it.

🔗 [Find out more about health and safety](#)

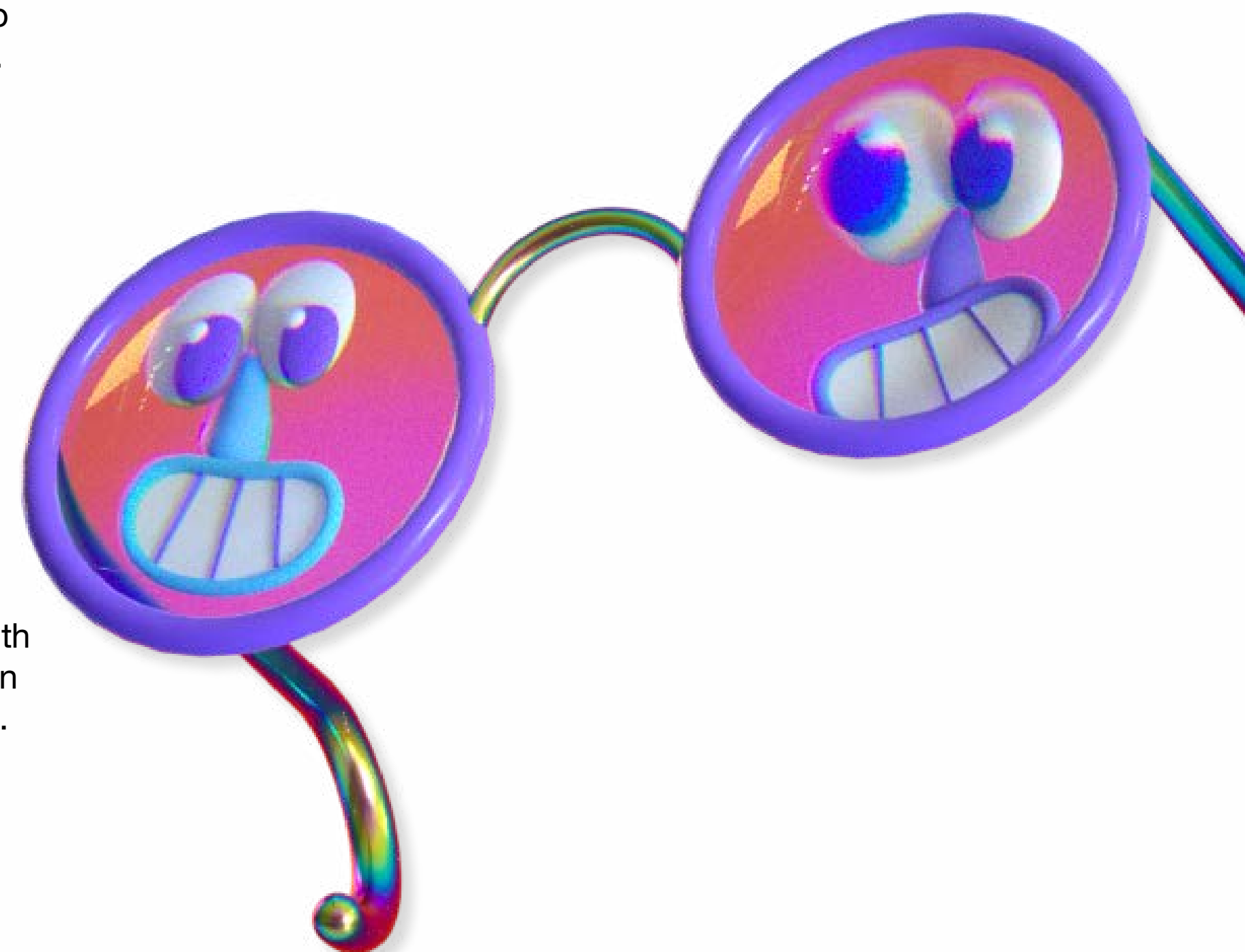
Fire procedure

If you discover a fire, activate the fire alarm at the nearest call point located adjacent to all emergency exits. If the alarm sounds, immediately leave the building by the nearest safest fire exit. To escape from the building please use the stairs and make your way out as quickly and safely as possible. Do not stop to collect personal belongings or use the lifts. When the alarm sounds, staff and students should proceed to the designated assembly points. Do not re-enter the building until instructed it is safe to do so by the Incident Manager or emergency services. While it's unlikely that there'll be a fire in one of our buildings, we ask all our staff and students to treat every alarm as a real emergency.

Mental health first aid

Students who are concerned about their or someone else's mental health should contact the Student Counselling Service. Mental Health First Aiders are located in all Colleges and can provide immediate support to people in crisis.

+44 (0)207 514 6251



Student support

Academic Support

Academic Support is here to enhance your studies at university and your progress into your future career. Academic Support works with all students from foundation to PhD level to develop knowledge and skills in areas such as reading, research and writing for your course, critical thinking, time management, presentations, working independently and collaboratively and more.

At LCF the Academic Support team works across all campuses; the relevant lead tutors are introduced to you at induction. Group sessions linked to your curriculum are given on course; you can book from a range of one-to-one and group sessions to discuss your own queries too.

To register for an academic support session, log in to Academic Support Online (ASO) using your UAL username and password, click on 'face to face support' (in the menu).

Visit ASO for guidance materials and information, support tutorials and events, as well as links to other useful resources and student services.

Students can also attend University-wide workshops on a range of Academic Support topics, where you can meet and share study practices with students from all levels and all Colleges across the University.

Academic Support group and one-to-one sessions take place online or in person. Please check the location or joining information for the session you are attending.

🔗 [Find out more about Academic Support](#)

Have a concern?

Student Representation and Course Committees

The 🔗 [Student Representation and Feedback webpages](#) include detailed information about your Course Committees; the student representative system we use to monitor the quality of your course; and the variety of ways in which you can provide feedback to help us improve your course.

Academic Registry

Based at John Prince's Street (Room 211), Academic Registry can help with:

- Extenuating Circumstances, appeals and complaints
- Letters for bank accounts and Confirmation of Enrolment letter (used for visa applications). Alternatively, download the appropriate letter by logging into the UAL Portal on 🔗 sits.arts.ac.uk

- Queries regarding attendance or taking time out, or general enquiries regarding your studies if you're unsure who to contact initially.

Academic Registry can also be contacted via email on ✉ student.admin@fashion.arts.ac.uk

Language Development

If English is an additional language for you, Language Development offers specialist tutorials, classes and resources in the language, academic skills and approaches to learning expected at UAL.

Find out more at arts.ac.uk, search English Language Development for students

🔗 [Find out more about Language Development](#)

✉ languagedevelopment@arts.ac.uk



Rakshita Arvind in the Studio, 2018 BA Creative Direction for Fashion, London College of Fashion, UAL | Photograph: Alys Tomlinson

Making the most of LCF

Arts SU at LCF

As well as having a central HQ based in High Holborn, you can also find Arts Students' Union (Arts SU) at your College! We have a dedicated team of staff and students who bring Arts SU services and general fabulousness direct to your campus.

If you want to find out more about a creative opportunity or just have a general chat, you can phone us on +44 (0)7984 961 844 or send us an email to [✉ info@arts.ac.uk](mailto:info@arts.ac.uk)

🔗 [Find out who your representatives are](#)

Find out more about your Students' Union in the other half of this guide.



Student life at LCF

LCF loves London and we are proud of our beautiful city, so we created seasonal guides to the best bits that you can explore from around the six LCF sites. We talked to some of our student content creators about what it's like to be a student at LCF and share their advice for new students.

The YOUR.LCF monthly newsletter is one of the ways you can find the latest news, what's on at LCF and opportunities for you to take part in to expand your skills, knowledge, networks and be part of the LCF community. You can also tag us and show us what you're up to @lcflondon_

🔗 [Find out more about student life at LCF](#)

Join in on social media using #LCFStudentLife

Graduate Futures at LCF

Studying at LCF gives you access to all the latest services and resources from the Graduate Futures team. We provide support for your career, freelancer and business start-up ambitions. The Graduate Futures Team supports all LCF students and alumni by:

- Connecting you with industry
- Providing tailored tutorials
- Running events to build your transferable skills

Graduate Futures offers:

- Online learning: develop your industry knowledge with our extensive range of podcasts, webinars, learning guides and online modules.
- Placements: access our support for finding exciting industry placement opportunities as part of an accredited course.
- Personalised 1:1 support: attend specialist coaching sessions, designed to support you on your career journey and to grow your entrepreneurial practice.
- Skills workshops: take part in our suite of tailored, practical and interactive workshops to help develop your personal and professional skills. For example; business modelling, interview techniques, finance, storytelling, negotiation and much more.
- Industry collaborations: gain access to a wide network of industry specialists, through our dedicated support and events.
- Community and networks: don't miss our range of boot camps, topical networking debates, hackathons, mock assessment centres and activities with other universities and organisations.
- Projects and competitions: enter live industry-led projects and entrepreneurial competitions.

✉ graduate.futures@fashion.arts.ac.uk
+44 (0)20 7514 7571

Making the most of LCF

SoundCloud podcasts

Discover LCF's SoundCloud, which includes podcasts with leading industry figures such as Henry Holland, Funmi Fetto and Rupert Sanderson; a Careers in Fashion series and music mixes by students and alumni.

Email ✉ communications@fashion.arts.ac.uk to get in touch if you have an idea for a podcast.

🔗 [Find out more about SoundCloud](#)

LCF archives

The LCF Archives are an eclectic and eccentric set of collections that use objects to tell stories and to inform and inspire your learning, creativity and practice. The Archives explore the history of London as a fashion capital and include items from the full fashion cycle - from paper patterns to press and promotion materials through to pieces of clothing that tell personal stories. Please visit our LCF Archives LibGuide to learn more about our collections and services and visit our Moodle and SharePoint sites to access other parts of our offer and LCF Archives resources.

Get in touch at ✉ archives@fashion.arts.ac.uk

🔗 [LCF Archives LibGuide](#)

🔗 [LCF Archives Moodle](#)

🔗 [LCF Archives SharePoint](#)

Fashion Space Gallery

The Fashion Space Gallery was launched to a public audience in 2010 to host presentations of work by leading practitioners in the field, themed group shows, performances and installations. The ethos behind the exhibitions will be one of excellence and innovation, supporting both established artists and cutting-edge and emerging talent. The space also provides LCF students and graduates with an inspiring and thought-provoking platform in which to discover their contemporaries.

The exhibition programme is free of charge and is supported by a programme of events, artist talks, lectures and performances.

🔗 [Find out more about Fashion Space Gallery](#)

Postgraduate experience

We provide a unique experience for postgraduate students at LCF, with specialist courses often taught by practitioners, access to industry events, careers advice, collaborative opportunities and a University-wide postgraduate community and support network.

The Collaborative Challenge is a unique opportunity for LCF postgraduate students to collaborate across disciplines to address challenges, provocations and concepts affecting the fashion landscape by engaging with current research and technologies, industry partners, alumni and academic partners.

🔗 [Find out more about Collaborative Challenge unit](#)



Making the most of LCF

Post-Grad Community

Looking to collaborate or network with students from other courses and colleges? Want to share your project with other people? UAL's Post-Grad Community provides MA and PhD students with access to other students and opportunities at UAL - across the 6 Colleges and 100+ MA courses.

A weekly newsletter is sent to your UAL email address every Friday which keeps you up to date with opportunities and events open to all postgrads at UAL. You can also join the Post-Grad Community's thriving social networks on Facebook, Instagram and Twitter.

🔗 [Find out more about Post-Grad Community](#)

Research

Research at LCF thrives within the College's unique specialist and transdisciplinary environment and is supported and resourced by dedicated research facilities such as the cosmetic science and digital laboratories, Fashion Space Gallery, as well as a world-class library and archive.

LCF hosts three world leading UAL research centres: Centre for Fashion Curation, Centre for Sustainable Fashion and Fashion Business Research Centre; the Digital Anthropology Lab and nine Research Hubs. Research spans practice and theory in design, performance, curation, artefact, psychology, cosmetic science, social science, sustainable and material practices, creative business and management, digital production and communication; film, media and cultural studies.

As well as our archives and library, the LCF research centres offer a great resource for your studies, from research to final projects.

Find out more at 🔗 arts.ac.uk search 'research at LCF' for more information on our research groups, networks and facilities.

🌱 Sustainability Initiatives

There are lots of ways to get involved with sustainability at LCF:

Based at LCF, 🔗 [Centre for Sustainable Fashion](#) (CSF) offer a range of free resources, online courses and events to help you develop your understanding of sustainability in fashion.

Centre for Sustainable Fashion offer monthly open mornings for LCF students, so you can gain expert advice for your projects from the team of specialist researchers – bookable via ✉ sustainability@fashion.arts.ac.uk.

LCF has gardens, biodiverse spaces and orchards, and students can grow natural dye plants, plants for fibre such as flax for linen and nettles (or any plants you like!). There are workshops and facilities to experiment with natural dyes and materials.

There are lots of opportunities to play an integral part of our sustainability journey, whether that's by getting involved in our Sustainability Working Group, Sustainability Interns programme, Green Week, climate assemblies and discussion groups or events.

Please act responsibly by recycling where possible and switching off equipment after use if it's your responsibility.

🔗 [Find out more about sustainability at UAL](#)

Better Lives

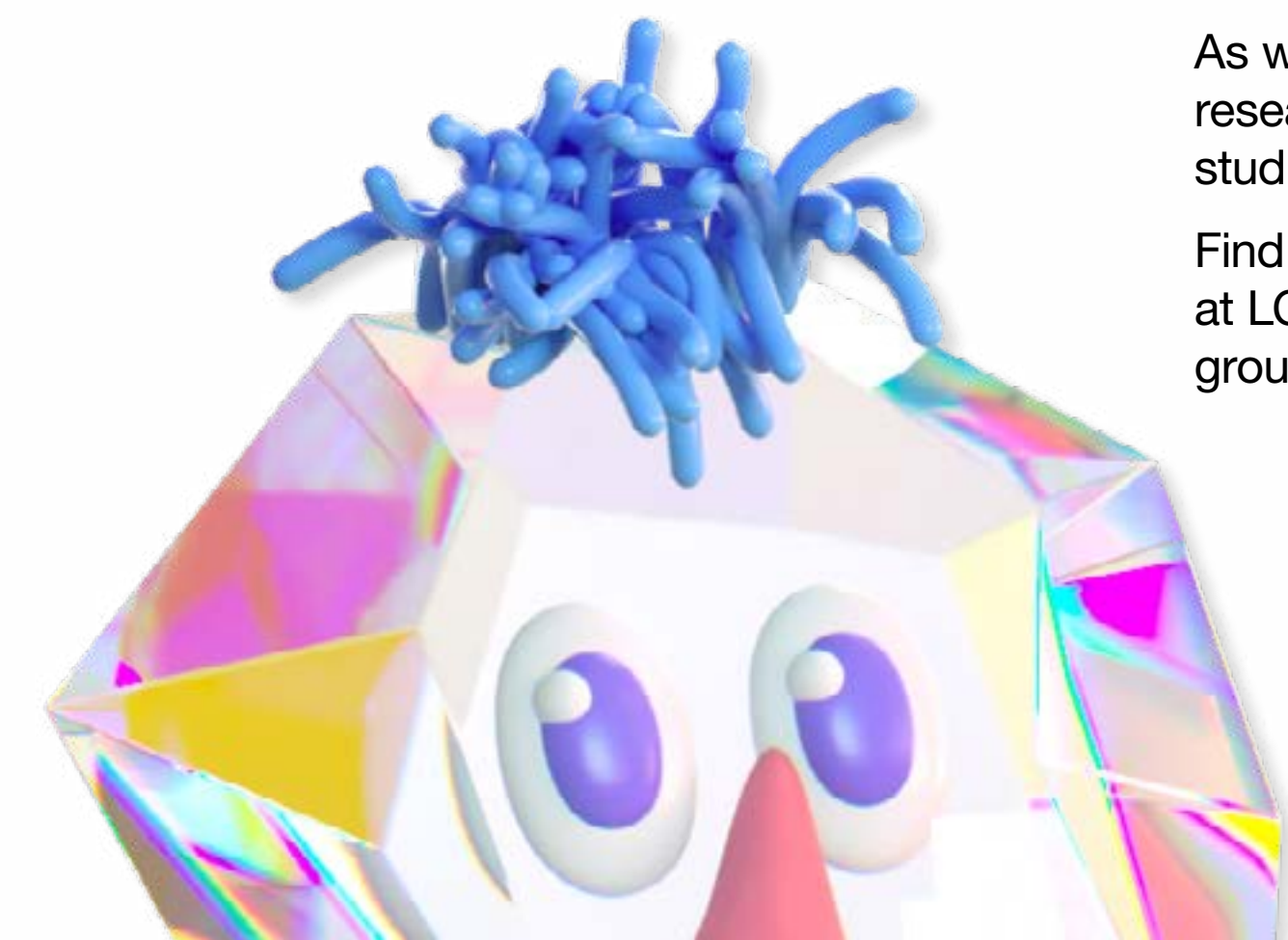
Better Lives is a term we use at LCF to describe the work we do that uses fashion as a discipline to drive change, build a sustainable future and improve the way we live.

Better Lives includes the College's work in sustainability, diversity and with community groups through social responsibility. You can learn more about some of our amazing projects in this area, such as working with Art Against Knives: making leather goods with young people from disadvantaged backgrounds or Making for Change: the manufacturing unit in a women's prison.

All undergraduate students at LCF take the Better Lives unit in their first year. That means 1,700 students learning about Better Lives at the same time, which gives you lots of opportunities to collaborate with people studying other courses. The unit has 3 themes: diversity, social responsibility and sustainability.

We've previously won two of the prestigious Green Gown Awards – the first in Benefitting Society, the second in Next Generation Learning and Skills. We are regularly finalists for the Awards.

🔗 [Find out more about Better Lives at LCF](#)



ual:

University of the Arts London

Welcome guide

camberwell college of arts | central saint martins | chelsea college of arts | london college of communication | london college of fashion | wimbledon college of arts

arts.ac.uk



Grayson Perry

Studying at UAL is the best way into a fulfilling life of visual creativity. The reasons for coming to UAL are the same now as they were for me 40 years ago when I began my own journey into the arts: I wanted to make art and I wanted to make my mark.

UAL is the world's biggest factory for trouble. We encourage students to challenge us and I'm always on the lookout for exciting, creative talent coming through the University. I love the time I spend with our students as it helps me to take the temperature of where young people are at.

Grayson Perry CBE RA
Chancellor of UAL



UAL Chancellor Grayson Perry during the Graduation, 2019, London College of Fashion, UAL | Photograph: David Poutney

“Come and show us the future and we can help show you the world.”

Grayson Perry CBE RA
Chancellor of UAL



Grayson Perry visits the private view, 2017 MA Design School, London College of Communication, UAL

James Purnell

I'm delighted you've chosen to start your creative future at University of the Arts London, which is made up of 6 world-renowned Colleges and 3 institutes:

- Camberwell College of Arts
- Central Saint Martins (CSM)
- Chelsea College of Arts
- London College of Communication (LCC)
- London College of Fashion (LCF)
- Wimbledon College of Arts
- UAL Creative Computing Institute (CCI)
- UAL Social Design Institute
- UAL Decolonising Arts Institute

You've joined a vibrant community of 19,000 students from more than 130 countries. You're also in one of the best cities in the world for art and design, with lots of opportunities to make the most of student life. To help you navigate your time at university in London, and to take advantage of all there is to offer, we've created this handy guide. In case you missed it, you can also take a look at our [UAL student guide](#) introducing you to UAL and London.

I hope you have a fantastic time at UAL, and I wish you every success for your future.

James Purnell
President & Vice-Chancellor



James Purnell at the LCF21 digital Graduate Exhibition at Victoria House Basement 2021, London College of Fashion, UAL | Photograph: Ana Blumenkron

Need to know

Social distancing

We've made specific arrangements for social distancing in all our buildings. Please follow the signs. We will provide you with all the important information and guidance you need.

Set up your email account

Your username and password are used to access the UAL network, which includes Moodle, on-site computers and email. You'll receive an email from us with your username and a one-time password link. Please set up your password as soon as possible.

It's essential you check your UAL email account regularly as it's where you'll get important news and updates. You can access this from any computer, laptop, or your phone using the MyUAL app. You can also download the 'Outlook' app for iOS or Android to check in regularly. Let us know if you have a problem with your account or need to reset your password.

Find out how to [reset your password](#)

Make sure you enrol online and find out about any local inductions. You will receive information about these by email.

Download MyUAL

MyUAL is our free student app with all the essential info you'll need in one place like your UAL email, timetable, events, jobs and news. You can log in using your UAL account details once you have enrolled.

We also use app alerts to let you know about incidents that may impact you – such as an IT issue or building closure. Make sure your notifications are turned on, so you don't miss anything.

Search 'MyUAL' in your phone's app store to download for free.

[Find out more about MyUAL](#)

Term dates

We have general term dates for 2021/22 but specific dates may vary for some courses.

There are also several public holidays (bank holidays) recognised in the UK throughout the year. On these days the University will be closed, as well as most businesses and non-essential services.

[Term dates and public holidays](#)



Morgane Sansay, 2021 Graduate Diploma Interior Design, Chelsea College of Arts, UAL

Our culture

Diversity

UAL believes the diversity of its staff and student community is fundamental to creative thinking and innovation in the arts. We are committed to removing barriers to progression and success, and promoting understanding and awareness of equality, diversity and inclusion for all.

We work in partnership with Arts Students' Union on initiatives to support this. Arts SU provides confidential advice and guidance to all students including trans and non-binary students, student carers and parents and students from diverse faith, ethnicity, gender identity and sexual orientation backgrounds.

🔗 [Find out more about student diversity](#)

Tell Someone

The University does not tolerate any form of racism, bullying, harassment or sexual violence. If at any point you have concerns, or want to talk to someone in confidence, you can contact Tell Someone.

✉ tellsomeone@arts.ac.uk

“Meeting like-minded people from all over the world inspired me to think outside the box, raised my self-awareness and opened my eyes on a different spectrum of professional opportunities.”

Khalil Madovi

Foundation Diploma in Art and Design



Our culture Sustainability

Sustainability is central to everything we do at UAL. Many of our courses dedicate time and resources to teaching sustainable practices and our central operations teams are committed to working in a sustainable way. Our Sustainability Manifesto is our action plan to keep reducing our carbon emissions. We're working to ambitious net zero carbon targets which will see us reach net zero on our direct emissions by 2030 and net zero by 2040 for our indirect emissions – this is 10 years ahead of the UK government's deadline.

📍 Green buildings

Camberwell was nominated for the “Campus of the Future” Green Gown award for our work in sustainable building. The Wimbledon Studio building also won the RIBA London Sustainability Award 2017 and a Green Apple Award for sustainability. It was the first time one of our buildings was recognised as ‘outstanding.’

More recently, LCF's East Bank campus is one of the largest buildings in an urban environment to achieve BREEAM ‘outstanding’.

📍 UAL Climate Emergency Network

The Climate Emergency Network is a growing community of students and staff who share the belief that urgent collective action is needed in the face of climate and ecological emergency. The Network publishes a regular newsletter, generates resources, curates exhibitions and organises events, while also lobbying the University and external bodies on matters concerning environmental policy, practice and justice. The Network is open to all and overseen collaboratively by both students and staff from across UAL.

🔗 [Sign up to the newsletter](#)

🔗 [Find out more about our Climate Emergency Network](#)

📍 Energy use

We're reducing carbon emissions across all our Colleges, and since 2017, we've been using 100% renewable electricity. We're proud to be the 5th most sustainable university in London according to the People & Planet University League.

📍 Saving energy and recycling

We actively encourage all our students to be responsible when it comes to saving energy and recycling so please switch off lights and equipment after use, and use the recycling bins on site.

📍 Green Week

Every February we have Green Week, which includes a wide range of sustainability-related activities across the University, including practical workshops, talks and debates.

🔗 [Find out more about sustainability at UAL](#)



Making the most of UAL

As a UAL student, you have special access to collections, archives, institutes, digital tools, employability support, international opportunities, events and more.

University archives, museum and special collections

Our libraries have outstanding physical and digital collections in art, design, communication, fashion and performance. These collections include historical archives and special collections such as zines, material samples and artists' books.

You can also access the University Archives and Special Collections Centre at LCC which specialises in material on printing, graphics and film, including the famous Stanley Kubrick Archive. Other collections in the University include the LCF Archive and the Museum & Study Collection at CSM.

🔗 [Find out more about collections and archives](#)

Institutes

Launched in 2019, UAL Creative Computing Institute (CCI) was the first of several new Institutes. We've also established the Decolonising Arts Institute and Social Design Institute.

CCI offers innovative and diverse courses, research opportunities and a public platform to explore computer science and creative practice. This includes a range of undergraduate and postgraduate courses such as BSc, MSc and MRes Creative Computing, MSc Data Science and AI for the Creative Industries and the new MA Internet Equalities and MA/MSc Computing and Creative Industry (Modular), plus an integrated research environment for MPhil/PhD students. There are also opportunities to take short and online courses alongside your current studies.

UAL Diploma in Creative Computing (year in creative computing)

By taking an extra year of study at CCI between years 2 and 3 of your UAL undergraduate degree, you'll have the opportunity to study with other undergraduates from across UAL in a specialist environment.

The year in creative computing will enhance your UAL degree with the computational skills shaping the future of the digital creative industries. On successful completion of the diploma and the final year of your undergraduate degree you will graduate with an enhanced degree title, for example BA Hons, Design (with Creative Computing).

🔗 [Find out more about CCI](#)



Making the most of UAL

Portfolio

Get creative with UAL's showcasing platform Portfolio, where you can present your work alongside other UAL students from various subjects. You can create a profile from the start of your course and update your projects right through to 2 years after graduation.

Portfolio enables you to show the world your work and projects, share your creative skills and interests, as well as connect and network with peers from across UAL.

🔗 [Find out more about Portfolio](#)

Virtual tours

Our Colleges have an extensive range of professional workshops and facilities on offer. Things might look a little different this autumn, but you can get an idea of our shared spaces, studios and workshops by taking one of our virtual tours.

🔗 [Find out more about virtual tours at UAL](#)

For full access and route guides visit

🔗 [accessable.co.uk](https://www.accessable.co.uk)

Careers and Employability

You might want to work during your studies to earn some extra money and gain experience. UAL can help you with your job search and application process.

We empower our students to make a living doing what they love and strive to support those underrepresented in the creative industries.

Working collaboratively with UAL courses, we enhance students' employability and creative attributes through experiential learning and access to industry. From the moment you arrive, you can:

- Find paid jobs, internships, competitions and volunteering opportunities on Creative Opportunities. For temporary roles, you can use UAL's in-house temping service, Arts Temps.
- Work on any skills you might need to get a job, freelance, or start your own business using our online resources.
- Use our practical guides and workshops to take you through everything from CV writing and tips for interviews to pricing your work and coming up with a business plan.
- Attend industry-specific talks and events which take place throughout the year.

- Access funding to help you as a designer or artist, or to start a business, as well as providing opportunities to show your work at various exhibitions and trade fairs.
- Benefit from having a mentor by your side to help you transition into professional working life.
- Learn about your Intellectual Property by making use of our IP Education resources.

UAL does not have its own service for students who want to do voluntary work; however, students interested in volunteering opportunities could consider those offered by the Mayor of London's office or those promoted on the Creative Opportunities board. If you're an international student, make sure you follow the restrictions of your visa.

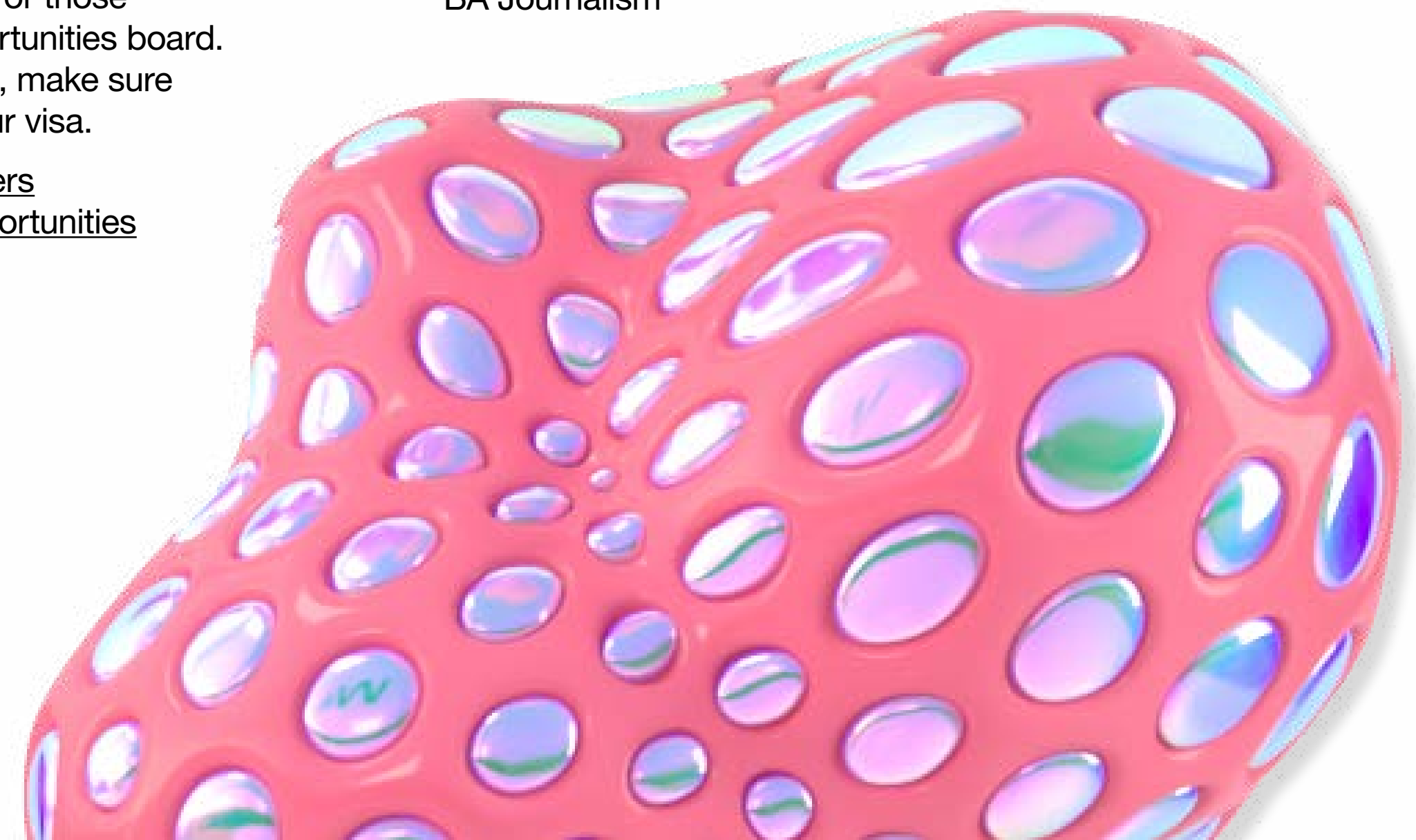
🔗 [Find out more at student careers](#)

🔗 [Find out more at Creative Opportunities](#)

🔗 [Find out more at Arts Temps](#)

“I was asked to help at the 2019 British Podcast Awards as assistant producer. It was an incredible work placement that taught me so much about the audio world of journalism.”

Laura Scheepers
BA Journalism



Making the most of UAL

International opportunities

In a global society, studying and living in a new country changes everything – especially you and your world view.

We offer opportunities to spend one or more terms studying outside of the UK at a partner institution or on a work placement abroad.

🔗 [Find out more about student mobility](#)

Events

There are loads of events you can get involved in to make the most of your time here. From summer degree shows to seminars, workshops, talks and symposiums, there really is something for everyone in our schedule.

🔗 [Find out more about what's on](#)

Social Programme

The Social Programme is an award-winning events and wellbeing programme led by students, for students. There are around 30 Halls Reps who run free and low cost events for students in halls of residences and sometimes across the wider University.

Weekly events include yoga, afternoon tea and film nights as well as monthly quiz nights and much more.

🔗 [Find out more about the latest event schedule](#)

📘 @UALsocial

📷 @UALsocial

🐦 @UALsocial



Mariana Charuto, 2021 BA Production Arts for Screen, Wimbledon College of Arts, UAL

Get support

Student Services

In addition to high-quality teaching, modern facilities and creative space for you to explore your ideas, skills and unique vision, UAL can provide you with support for your studies and wellbeing. Our Student Services staff provide a professional, confidential and free service to all UAL students.

🔗 [Find out more about Student Services](#)

+44 (0)20 7514 6250

Student Advice

Get support with financial and immigration questions and advice on any problems that may occur in day-to-day life.

🔗 [Find out more about Student Advice](#)

Immigration and visas

Students who are from countries outside of the UK will need visa or immigration permission allowing them to live and study in the UK.

🔗 [Find out more about immigration and visas](#)

Student fees and funding, including scholarships

The Student Advice and Funding Service provides students with information and advice about funding options available to cover tuition fees, living costs and course costs. You can also find out more about scholarships, bursaries and awards.

🔗 [Find out more about student fees and funding](#)

Disability and dyslexia

The Disability Service provides advice and support for disabled students and students who are dyslexic or have any other specific learning difference. Support is available at any point throughout your time at UAL.

🔗 [Find out more about The Disability Service](#)

Accommodation Services

Whether you choose to live in one of our halls of residence or in a privately rented home, our Accommodation Services team can help you find a suitable place to live throughout your time at University.

🔗 [Find out more about Accommodation](#) and 🔗 [Halls Life](#)

+44 (0)20 7514 6240

✉ accommodation@arts.ac.uk

🐦 @UALhalls

📘 @UALAccommodation



Visit a Helpdesk

UAL Student Centre

1st floor, 272 High Holborn, WC1V 7EY
Monday to Friday 9am - 5pm
+44 (0)20 7514 6900

London College of Communication

Student Services, WG 09
Elephant and Castle, SE1 6SB
Monday to Friday 9.30am - 4.30pm
+44 (0)20 7514 6590

Central Saint Martins

Student Centre, Reception
1 Granary Square, N1C 4AA
Monday to Friday 10am - 5pm
+44 (0)20 7514 7199

✉ CSMstudentcentre@arts.ac.uk

Camberwell College of Arts

Student Centre, A1C01
45-65 Peckham Rd, SE5 8UF
Monday to Friday 9.30am - 4.30pm
+44 (0)20 7514 6326

Academic support

Academic Support

At UAL we consider studying and learning to be creative practices. This is a core influence on your holistic development and experience of your chosen course. Academic Support Online is the place to go to find all classes, tutorials, resources and discussion spaces that will help you extend and progress your work, together with links to libraries, Learning Zones and digital tools.

Academic Support tutors are based in your College and across the University, and work closely with course teams and Language Development, Library and other Student Support staff. Academic Support tutors will be introduced to you during inductions.

Visit our website to find resources, and to register for group and one-to-one support sessions in your College and across UAL. You can also find more information through Moodle.

Contact us if you can't find what you need:
✉ academicsupport@arts.ac.uk

Extenuating Circumstances

Extenuating Circumstances are things which are unexpected, significantly disruptive and beyond your control, which may affect your ability to meet assessment and course deadlines. If you're concerned about your grades or think you might be eligible for Extenuating Circumstances, your course leader should be the first point of contact.

🔗 [Find out more about Extenuating Circumstances](#)

Library and Learning Zones

As a UAL student, you have access to all 6 College libraries. You can use your ID card to borrow from our inspirational collections and your UAL login to access our specialist online collections. Search the 🔗 [online catalogue](#) to order books from other libraries and collect at your site.

Our libraries have bookable study with computers, photocopying and printing facilities. You can also borrow a laptop and get help from the library staff to develop your research or digital skills.

Our Learning Zones and IT areas are for social and activity-based study in an informal environment and are open to all students.

This includes the 24/7 Learning Zone at Camberwell open all year round and 24-hour opening at CSM from Monday - Thursday, which is available during certain weeks in term time.

🔗 [Find out more about our opening hours](#)

We will tell you more about the library facilities when you attend an introduction during your first term, with other sessions offered later in your course. You can also find our workshops and tutorials on 🔗 [Academic Support Online](#)

Remember, the library staff are here to help, so ask at our desks or online using 🔗 [live chat](#) if you have questions.

Find out more about 🔗 [library services](#), including support available for disabled and dyslexic students.

Moodle

This is the online home for your studies where you will find information, resources and online activities relating to your course of study. Your tutor may also use Moodle to communicate additional news or information about your course. Your course site will have important announcements and assignment details and should be checked regularly.

🔗 [Login to Moodle](#)

🔗 [Find out more about Moodle](#)

“Be proactive and take advantage of all the facilities. There are so many workshops and opportunities to learn new skills, create and be creative.”

Marie-Lilien Funk

BA (Hons) Design Management



Get connected

Wi-Fi access

Connect to UAL-Wi-Fi using your UAL username or email and password.

IT help and support

IT Services look after all the digital stuff at UAL including your account, your email, computers, printing and online security.

If you get stuck or need help with an account or system, call the IT Service Desk on +44 (0)20 7514 9898.

They're available 24/7, 365 days a year.

You can also raise a support ticket on [MySupport](#) or non-urgent enquiries

[Find more support at IT Services](#) or use the IT support tile on MyUAL

Printing

You'll find printers at multiple College locations, including all Libraries and Learning Zones. There are many ways to print - you can even print from your own mobile device or from an off-site location!

Printing costs vary depending on size and colourway. You can top-up online by card at ualprint.arts.ac.uk or by using the machines at College Libraries. There's also a handy 'Print credits' tile on [the MyUAL app](#).

[Find out more at printing at UAL](#)



Stay informed

As well as following our social channels, we have a number of ways for you to know what's going on. We'll keep you informed in the following ways:

UAL Portal

The UAL Portal is where you can access key information regarding your application, enrolment and assessments throughout your studies with UAL. You can view your personal information and download status letters under 'My Study Details'.

It is also important that you update us immediately if there are any changes to your contact details.

🔗 [Find out more about the UAL portal](#)

Student news

We've got a dedicated news feed just for you! Here, we'll publish news, opportunities, and articles to help you in your time at UAL.

🔗 [Find out more about the latest news from your College](#)

UAL text alerts

Occasionally we'll need to tell you about something important, such as building closures or other incidents. In this case, you'll receive a text to your mobile phone with the key information.

UAL Post-Grad Community

Our Post-Grad Community was established in 2013 and now more than ever, community is a hugely important part of our lives. As well as providing a support network for our MA and PhD students we also offer access to cross-College and cross-disciplinary opportunities and events. This leads to an informed, connected and confident network of creative professionals who continue to inspire each other throughout their careers.

A programme of events encourages skills-sharing, networking, collaboration and new communities of practice. Events take place at UAL and further afield, and include talks with industry specialists, visits to artists' studios, curator-led tours and student-led activity.

We support a growing number of issue specific, cross-disciplinary interest groups led by postgraduate students and academics. These connect creatives with shared research interests across different subject areas.

The weekly newsletter shares details of events, opportunities, student articles and open calls for collaboration. You can also join the community across the Post-Grad Community's thriving social networks.

🔗 [Find out more about Post-Grad Community](#)



Tatiana Muringani, 2021 MArch - Architecture, Central Saint Martins, UAL

Wellbeing

UAL is here to support you no matter how big or small a problem. If you're worried about something, feeling emotional or just want to talk, we want to help. Contact our support services - including counselling, health advice and more.

🔗 [Find out more about wellbeing at UAL](#)

Mental health

Our free and confidential help with emotional or course-related issues can keep you from feeling overwhelmed. Check out our Counselling Service.

+44 (0)20 7514 6251
✉ counselling@arts.ac.uk

Health advice

Our health advisers offer one-to-one sessions to discuss lifestyle (including alcohol, drugs and smoking), sexual, physical and mental health. You can also find out about other services like registering with a GP and visiting a dentist in London.

+44 (0)20 7514 6251
✉ studenthealth@arts.ac.uk

Chaplaincy

Our Chaplains are also on hand to offer faith-based support. Get in touch:

William Whitcombe
+44(0)7872 816157
✉ w.whitcombe@arts.ac.uk

Mark Dean
+44(0)7843 329587
✉ m.w.dean@arts.ac.uk

English Language Development

If English is additional language for you, we offer one-to-one tutorials, weekly subject-specific classes and workshops to build your English skills. These classes will help you to understand the different types of assignments and become more confident in your studies.

🔗 [Find out more about Language Development](#)
✉ languagedevelopment@arts.ac.uk

Modern Languages

You can also study a modern language course at the Language Centre, incorporating language learning with arts and culture topics from different countries. Our modern languages courses are open to University students, staff and members of the public.

🔗 [Find out more about modern languages](#)



Arts SU and you

Arts Students Union (Arts SU) is run by students for students. It's an independent, member-led organisation that is directed by you and students elect our full-time officers each year. While we have central office on the first floor at High Holborn, you can also find Arts SU at your College. Our dedicated team of staff and students bring Arts SU services and general fabulousness direct to your campus.

Chat to us about events, campaigns, academic representation, independent advice, leadership or creative opportunities, getting funding for projects and more. Your elected Student Officers are here to represent you. Their roles cover different parts of the student experience, so please do get in touch!

Find out more at [🔗 arts-su.com](https://arts-su.com)

Students' Union Officers

Armani Sutherland

Activities Officer

✉ activities@su.arts.ac.uk

Rachel Williams

Education Officer

✉ education@su.arts.ac.uk

Syahadah Shahril

Campaigns Officer

✉ campaigns@su.arts.ac.uk

Georgia Spencer

Welfare Officer

✉ welfare@su.arts.ac.uk

🔗 [Find out more about your union](#)



Esma Yildiz, 2021 BA Fashion Design Technology - Menswear, London College of Fashion, UAL

Making the most of Arts SU

Activities and Wellbeing

With over 40 societies and 17 sports clubs available to join, Arts SU can help you find your community. We offer both competitive and non-competitive sporting opportunities, with some teams competing in the national (BUCS) and London (LUSL) leagues, and others just offering social sport opportunities. Our clubs and societies are one of the easiest ways to meet people that share the same interests and passions as you, from across all 6 Colleges.

For those students already competing at a high level, we offer an Elite Athlete Programme. This is designed to support the very best student athletes in any sporting discipline competing at a national or international level, to help balance an academic and sporting career.

Our wellbeing programme, Arts Active, is also open for you to join. Recently we have been offering sessions covering creative writing, yoga, creative power hour and mindfulness.

🔗 [Find your community through our programmes](#)

Advice Service

Arts SU Advice Service offers free, confidential advice, which means we won't tell your College you have talked to us (unless you want us to) and we are completely independent from the University.

We can help you with academic processes such as Extenuating Circumstances, appeals and complaints, as well as accommodation issues.

You can talk to us by booking an appointment for a time that suits you or visiting our website to find out where we are.

🔗 [Find out more about our Advice Service](#)

Course Representatives

Course Reps are students who volunteer to represent their course at University meetings. They have a lot of influence over issues like curriculum design, facility access, opening hours and their efforts ensure students are heard. It is a great opportunity to work directly with the Students' Union and UAL staff members to support the student experience and develop a variety of skills yourself as a representative.

Each course will elect their course reps in the first few weeks of term. Talk to your course leader to find out how you can get involved.

Made in Arts London

Arts SU runs Made in Arts London (MiAL), a uniquely student-led enterprise. MiAL student artists can sell pieces online, exhibit in galleries, attend training workshops and support and learn from each other. UAL also offers numerous and varied professional development opportunities and mentorships throughout the year to all* current UAL students.

🔗 [Find out more about creative opportunities](#)

*Students who are on Tier 4 visas, or any other visas with a work restriction are not allowed to be self-employed, freelance, or sell work to have an income.



Living in London

It's easier to think of London as lots of tiny towns rather than one big city. Every area in London has a different ambience, atmosphere and local vibe and before long, you will have your favourites. London can be both an exciting and challenging experience.

This section will give you an idea of what it's like to live here, along with some useful tips about daily life to help you make this diverse and vibrant city your home.

Register with a doctor

You should register with a doctor near your new home so you can get to them easily if you need medical attention. Visits to the doctor and emergency treatment are free for those registered with the NHS, however, you will be required to pay a fee for any medication, or treatment for any pre-existing conditions.

Open a student bank account

You can do this by going into a bank branch of your choice – we'd recommend going to one close to your new home in London. If you're not from the UK, you'll need to bring a copy of your visa and a valid passport.

Get Council Tax exemption

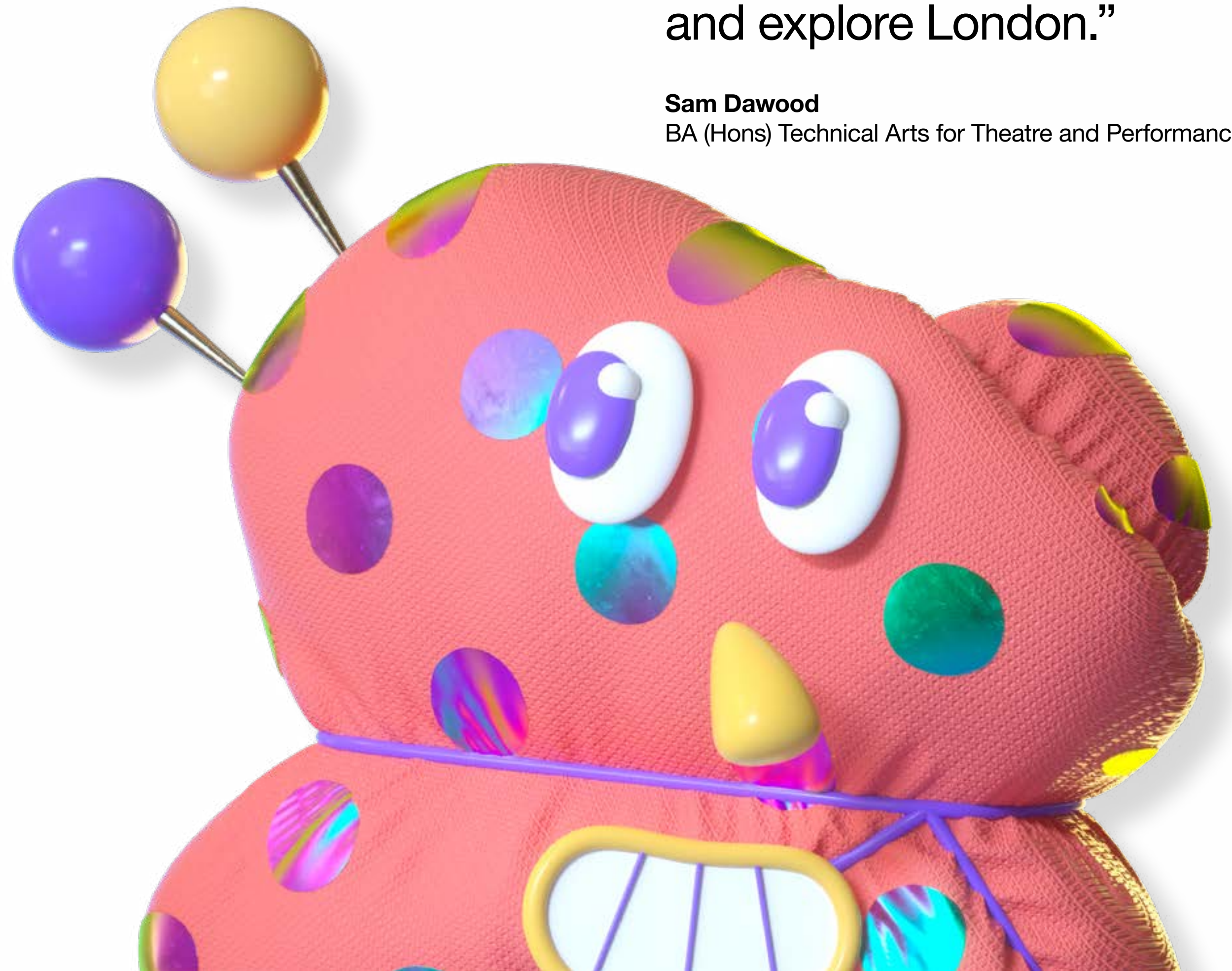
Full-time students on most courses do not have to pay 'Council Tax', a fee that residents pay to the local government for waste collection, recycling and general maintenance. If you're renting privately, to avoid receiving a Council Tax bill, you can request a Council Tax Exemption Certificate after you enrol on your main course.

🔗 [Find out more about Council Tax exemption](#)

“Go and visit the other Colleges and explore London.”

Sam Dawood

BA (Hons) Technical Arts for Theatre and Performance



Travel

Travelling around London

London has one of the largest transport networks in the world and once you get used to it, you'll find it easy to use. With multiple ways of getting around, the best thing to do is plan your journey by using ↗ [Transport for London's \(TfL\) 'journey planner'](#), available on its website or as an app. Alternative apps to help you find your way around London are ↗ [Citymapper](#) and London Transport.

Remember to follow current COVID-19 guidance when using public transport.

Underground trains

The most popular method of travel is the London Underground, also known as the Tube. It's the quickest way to travel in and around London and has 11 'lines', some of which are open 24 hours on weekends. Tip: Travelling outside the busiest hours (known as 'peak time' between 6.30am to 9.30am and 4pm to 7pm on the weekdays) is cheaper and less crowded.

Buses

Buses cover all zones of London, and you can get from one zone to another for a set fare. You can also travel on more than 1 bus for the same fare, but you must complete your journey within an hour. It's a convenient way to get to know your surrounding area but you should factor in traffic on the roads when planning your journey. Some buses work 24 hours, with most stopping around midnight.

Ways to pay

There are a range of ways to pay for your travel and the cheapest method depends on where you live and which transport you'll use most often. London buses do not accept cash payments but you can pay with a variety of cashless methods.

Sign up for a Student Oyster card

Students are eligible for discounted travel with a Transport for London (TfL) Student Oyster photocard. With a Student Oyster photocard, you will save 30% of the price of a Travelcard and Bus Pass, available to buy for daily, weekly and monthly use.

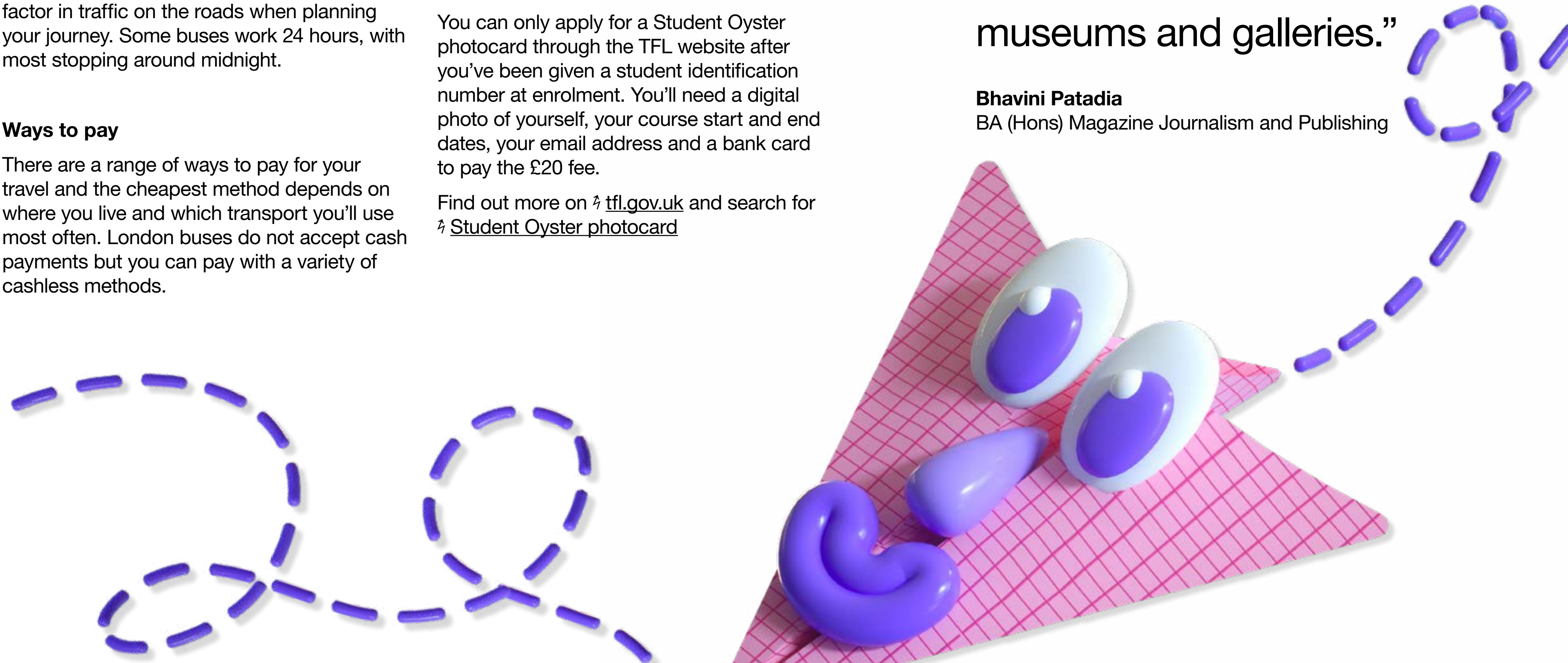
You can only apply for a Student Oyster photocard through the TfL website after you've been given a student identification number at enrolment. You'll need a digital photo of yourself, your course start and end dates, your email address and a bank card to pay the £20 fee.

Find out more on ↗ tfl.gov.uk and search for ↗ [Student Oyster photocard](#)

“One of the best things about UAL is its location. You can travel easily in London to visit lots of museums and galleries.”

Bhavini Patadia

BA (Hons) Magazine Journalism and Publishing



Travel

🚶 Walking

The best way to travel in London is walking. Start somewhere central like Oxford Circus and walk in any direction, and before you know it you will reach another Tube stop you recognise. You'll be surprised how small central London really is. If you get lost, Google Maps and other similar apps will help you find your way.

🚲 Cycling

Cycling is an affordable and healthy way to travel around London. If you don't have your own bicycle, you can hire one from as little as £2. Simply go to any docking station in London with your bank card and touch the screen to get started. There's no need to book - hire a bike, ride it to your destination, then simply return it to the nearest docking station.

TfL also offers free Cycle Skills lessons, advice on how to protect your bike and has some great guides for when you're ready to take to the road.

Travelling around the UK

You might want to travel to other parts of the UK while you're here and you can do this with:

- Coaches: often the cheapest way to travel as sometimes you can get a ticket for as little as £1 when you book in advance.
- Trains: can be expensive so it's best to book in advance using websites like [Trainline](#) to compare prices. You can get more information about train travel in the UK on the [National Rail website](#).



Phoebe Carraro, 2021 BA Fine Art Sculpture, Camberwell College of Arts, UAL

Save money

Money-saving tips

There are lots of ways to save a little extra money during your time in London.

You can buy a TOTUM card which will save you money at over 200 places, including fashion, electronics and food retailers, as well as entertainment and travel. It also includes an International Student Card that can be used abroad. Shops don't always advertise the discount, so always ask if they offer student discounts.

🔗 totum.com

Student Art Pass

Get your Student Art Pass and discounted entry to museums and exhibitions across the UK.

🔗 [Find out more about Student Art Pass](#)

Local discount scheme

As a student, you might be able to get discounts depending on the area you chose to live in. Discounts are offered by the Borough Council (which looks after the area you live in) and can be used for local sport centres/gyms, restaurants and events. Search your council's website to see what discounts they offer to residents.

🔗 Online discounts

Websites such as 🔗 [VoucherCloud](#) and 🔗 [Groupon](#) have lots of offers and are great for treating yourself to anything from a massage to a meal. Buy a reusable cup and get discounts in many coffee shops as well as being more sustainable!

🔗 [Find out more about student discounts and info about additional and living costs, as well as budgeting advice](#)



Stay safe

We want UAL to be a safe place for all students, staff and visitors, so we take health and safety very seriously. You'll be given detailed safety information during your course induction, like fire and emergency procedures and rules for using machinery in a safe and sensible way.

This year, we've also made specific arrangements for social distancing and continue to provide students and staff with all the important information and guidance about the Coronavirus pandemic.

UAL Health and safety

Evacuation assistance

If you need assistance to evacuate a building in an emergency, your course leader will make sure a Personal Emergency Evacuation Plan (PEEP) is completed with you. Your PEEP will describe what you need to do in an emergency and what assistance will be provided by other people.

Risk assessments

During your studies you may need to complete a risk assessment for your work. This is an important part of planning your work, identifying any hazards, keeping you and other people safe. You can find the general risk assessment form in your course handbook and on Moodle. You can speak to your tutors or the College Health and Safety Advisor for more information, or if your work is complex.

Safe working

When you start with us, we will give you an induction to the site and safe working practices while on and off site as well as an overview of how social distancing may impact the way you use our buildings. Your course team will be able to give you information about safe working at home.

For your own safety we ask that you don't work alone in our rooms and that there should always be at least 3 people in a room at any time. This is really important because if an accident happens, one person can stay with the injured person and the other can go for help. You're not allowed to use high-risk areas unless you have direct supervision from a technician.



Katy Philpot, 2021 BA Photography, London College of Communication, UAL

Stay safe

Hazardous substances

There are a number of activities, processes and pieces of equipment at UAL that are potentially hazardous. We take action to limit these hazards as much as we can, but we will also expect you to follow the instructions and safety rules when using ladders, lathes, milling and cutting machinery, electrical equipment and chemicals. We may also ask you to wear protective equipment such as ear defenders or safety glasses, or to use other safety equipment like equipment guards. You will be told about these requirements at your workshop and studio inductions. If you have any questions or need advice, please speak to your tutor or one of the technicians.

🔗 [Find out more about student health and safety](#)

London is generally a safe city to live in, but like any new place, you should take time to learn how to look after yourself and your belongings. Here are some top tips:

- Keep your purse or wallet close to your body and don't carry too much cash.
- Keep all valuables out of sight when out and about, especially when in crowded places.
- Carry your laptop in a rucksack rather than a laptop bag so it's not easily seen.
- Register your pocket electronics (phone, iPad, iPod) for free on 🔗 [immobilise.com](https://www.immobilise.com) so if they get stolen and police have to search for them, they can check the serial number and track you as the owner.
- Plan your route before you leave; the Transport for London website 🔗 tfl.gov.uk is a good place to start.
- Avoid walking alone at night; keep to well-lit main roads or take a taxi for longer distances and only use registered taxis or minicabs.

- Report any incidents, suspicious activity or stolen belongings to the police. Dial 101 for your nearest police service or 999 in an emergency.
- NHS 111 can help if you have an urgent medical problem and you're not sure what to do. Go to an Accident and Emergency (A&E) department at your nearest hospital if you have a serious injury or illness.
- Students are sometimes targeted online by people using scams and trying to access personal information and bank details through things like email.

🔗 [Find out more about staying safe in your accommodation, on transport and online](#)

